

## ACVRL1 Antibody

Catalog No: #43246

Orders: [order@signalwayantibody.com](mailto:order@signalwayantibody.com)Support: [tech@signalwayantibody.com](mailto:tech@signalwayantibody.com)

## Description

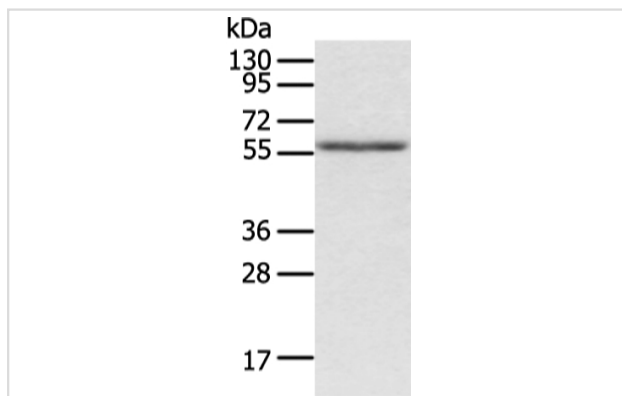
Product Name	ACVRL1 Antibody
Host Species	Rabbit
Clonality	Polyclonal
Purification	Antigen affinity purification.
Applications	WB IHC
Species Reactivity	Hu
Specificity	The antibody detects endogenous levels of total ACVRL1 protein.
Immunogen Type	peptide
Immunogen Description	Synthetic peptide of human ACVRL1
Target Name	ACVRL1
Other Names	HHT; ALK1; HHT2; ORW2; SKR3; ALK-1; TSR-I; ACVRLK1
Accession No.	Swiss-Prot#: P37023?Gene ID: 94
Uniprot	P37023
GeneID	94;
Calculated MW	56kd
Concentration	2.9mg/ml
Formulation	Rabbit IgG in pH7.4 PBS, 0.05% NaN <sub>3</sub> , 40% Glycerol.
Storage	Store at -20°C

## Application Details

Western blotting: 1:200-1:1000

Immunohistochemistry: 1:25-1:100

## Images



Gel: 8%SDS-PAGE

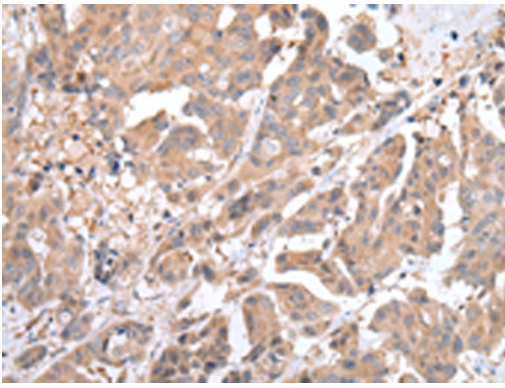
Lysate: 40 µg

Lane: Human placenta tissue

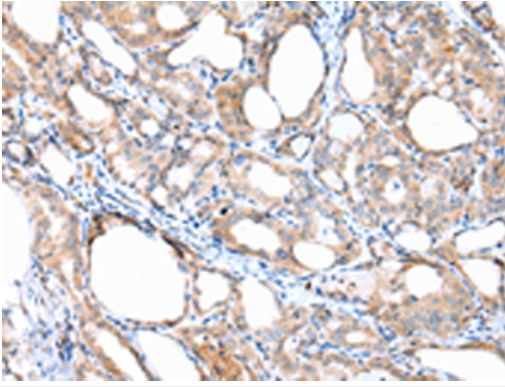
Primary antibody: 1/750 dilution

Secondary antibody: Goat anti rabbit IgG at 1/8000 dilution

Exposure time: 1 minute



Immunohistochemical analysis of paraffin-embedded Human breast cancer tissue using #43246 at dilution 1/45.



Immunohistochemical analysis of paraffin-embedded Human thyroid cancer tissue using #43246 at dilution 1/45.

## Background

This gene encodes a type I cell-surface receptor for the TGF-beta superfamily of ligands. It shares with other type I receptors a high degree of similarity in serine-threonine kinase subdomains, a glycine- and serine-rich region (called the GS domain) preceding the kinase domain, and a short C-terminal tail. The encoded protein, sometimes termed ALK1, shares similar domain structures with other closely related ALK or activin receptor-like kinase proteins that form a subfamily of receptor serine/threonine kinases.?

Note: This product is for in vitro research use only