

## ATG16L1 Antibody

Catalog No: #43247

Orders: [order@signalwayantibody.com](mailto:order@signalwayantibody.com)Support: [tech@signalwayantibody.com](mailto:tech@signalwayantibody.com)

## Description

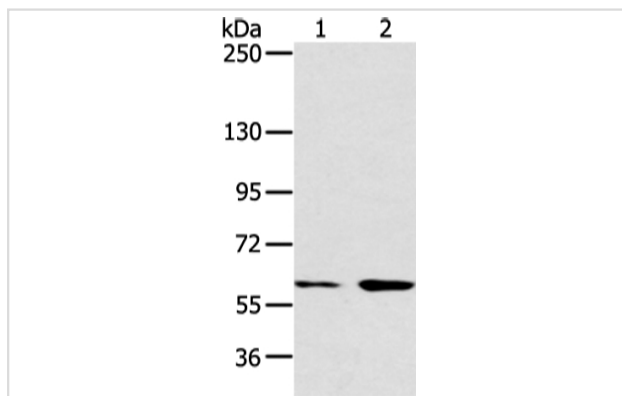
Product Name	ATG16L1 Antibody
Host Species	Rabbit
Clonality	Polyclonal
Purification	Antigen affinity purification.
Applications	WB IHC
Species Reactivity	Hu
Specificity	The antibody detects endogenous levels of total ATG16L1 protein.
Immunogen Type	peptide
Immunogen Description	Synthetic peptide of human ATG16L1
Target Name	ATG16L1
Other Names	IBD10; WDR30; APG16L; ATG16A; ATG16L
Accession No.	Swiss-Prot#: Q676U5 Gene ID: 55054
Uniprot	Q676U5
GeneID	55054;
Calculated MW	68kd
Concentration	3mg/ml
Formulation	Rabbit IgG in pH7.4 PBS, 0.05% NaN <sub>3</sub> , 40% Glycerol.
Storage	Store at -20°C

## Application Details

Western blotting: 1:500-1:2000

Immunohistochemistry: 1:25-1:100

## Images



Gel: 6%SDS-PAGE

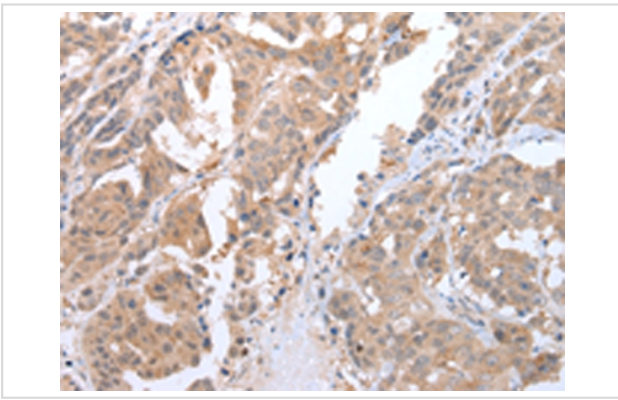
Lysate: 40 µg

Lane 1-2: HeLa and raji cell

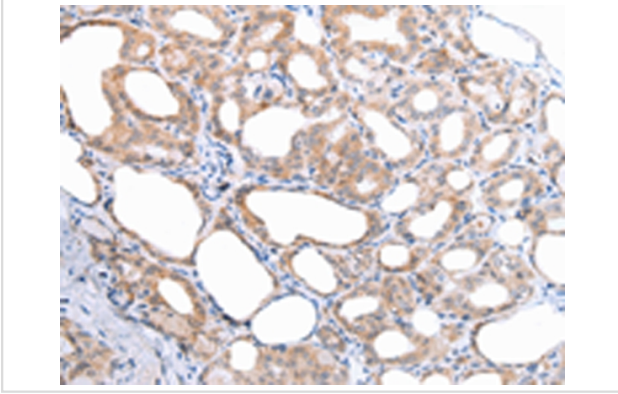
Primary antibody: 1/750 dilution

Secondary antibody: Goat anti rabbit IgG at 1/8000 dilution

Exposure time: 20 seconds



Immunohistochemical analysis of paraffin-embedded Human breast cancer tissue using #43247 at dilution 1/45.



Immunohistochemical analysis of paraffin-embedded Human thyroid cancer tissue using #43247 at dilution 1/45.

## Background

The protein encoded by this gene is part of a large protein complex that is necessary for autophagy, the major process by which intracellular components are targeted to lysosomes for degradation. Defects in this gene are a cause of susceptibility to inflammatory bowel disease type 10 (IBD10). Several transcript variants encoding different isoforms have been found for this gene.

Note: This product is for in vitro research use only