

ALDH2 Antibody

Catalog No: #43248

Orders: order@signalwayantibody.comSupport: tech@signalwayantibody.com

Description

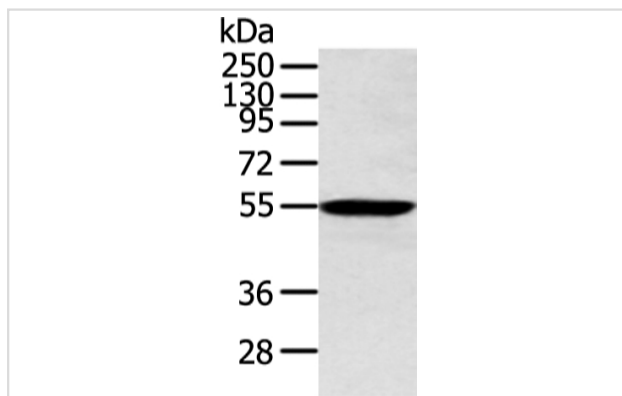
Product Name	ALDH2 Antibody
Host Species	Rabbit
Clonality	Polyclonal
Purification	Antigen affinity purification.
Applications	WB IHC
Species Reactivity	Hu
Specificity	The antibody detects endogenous levels of total ALDH2 protein.
Immunogen Type	peptide
Immunogen Description	Synthetic peptide of human ALDH2
Target Name	ALDH2
Other Names	ALDM; ALDH1; ALDH-E2
Accession No.	Swiss-Prot#: P05091 Gene ID: 217
Uniprot	P05091
GeneID	217;
Calculated MW	56kd
Concentration	1.1mg/ml
Formulation	Rabbit IgG in pH7.4 PBS, 0.05% NaN ₃ , 40% Glycerol.
Storage	Store at -20°C

Application Details

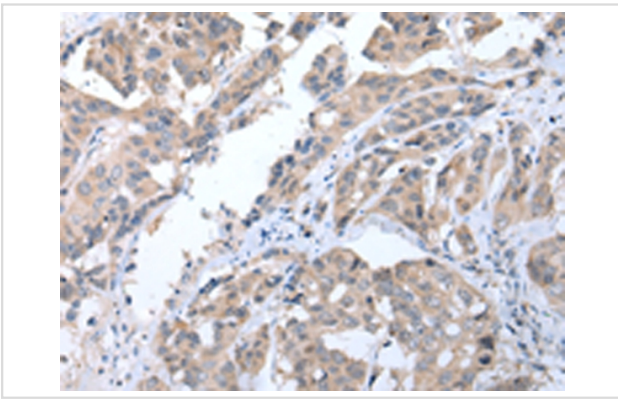
Western blotting: 1:500-1:2000

Immunohistochemistry: 1:25-1:100

Images



Gel: 8%SDS-PAGE
Lysate: 40 µg
Lane: Human lung cancer tissue
Primary antibody: 1/300 dilution
Secondary antibody: Goat anti rabbit IgG at 1/8000 dilution
Exposure time: 40 seconds



Immunohistochemical analysis of paraffin-embedded Human breast cancer tissue using #43248 at dilution 1/20,

Background

This protein belongs to the aldehyde dehydrogenase family of proteins. Aldehyde dehydrogenase is the second enzyme of the major oxidative pathway of alcohol metabolism. Two major liver isoforms of aldehyde dehydrogenase, cytosolic and mitochondrial, can be distinguished by their electrophoretic mobilities, kinetic properties, and subcellular localizations. Most Caucasians have two major isozymes, while approximately 50% of Orientals have the cytosolic isozyme but not the mitochondrial isozyme.?

Note: This product is for in vitro research use only