

COX7C Antibody

Catalog No: #43250

Orders: order@signalwayantibody.com

Support: tech@signalwayantibody.com

Description

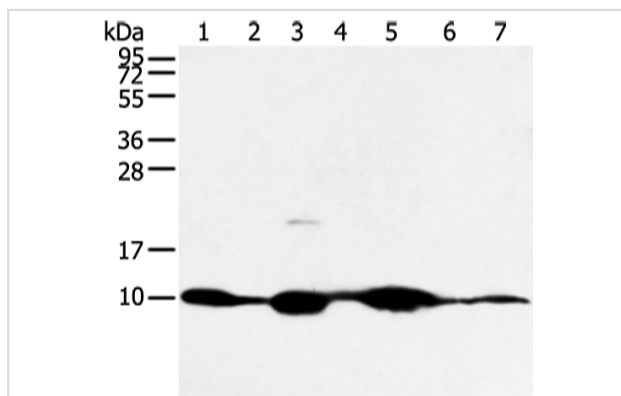
Product Name	COX7C Antibody
Host Species	Rabbit
Clonality	Polyclonal
Purification	Antigen affinity purification.
Applications	WB IHC
Species Reactivity	Hu Ms Rt
Specificity	The antibody detects endogenous levels of total COX7C protein.
Immunogen Type	peptide
Immunogen Description	Synthetic peptide of human COX7C
Target Name	COX7C
Other Names	COX7C; Cytochrome c oxidase polypeptide VIIc; Cytochrome c oxidase subunit 7C, mitochondrial; cytochrome c oxidase subunit VIIc
Accession No.	Swiss-Prot#: P15954 Gene ID: 1350
Uniprot	P15954
GeneID	1350;
Calculated MW	7kd
Concentration	2.5mg/ml
Formulation	Rabbit IgG in pH7.4 PBS, 0.05% NaN ₃ , 40% Glycerol.
Storage	Store at -20°C

Application Details

Western blotting: 1:500-1:2000

Immunohistochemistry: 1:25-1:100

Images



Gel: 12%SDS-PAGE

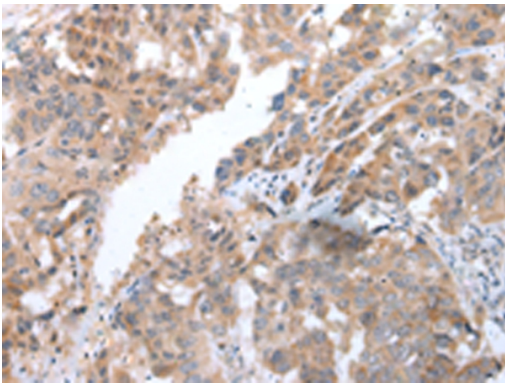
Lysate: 40 µg

Lane 1-7: Mouse muscle and human fetal muscle tissue, mouse heart tissue and PC3 cell, mouse kidney and small intestines tissue, 231 cell

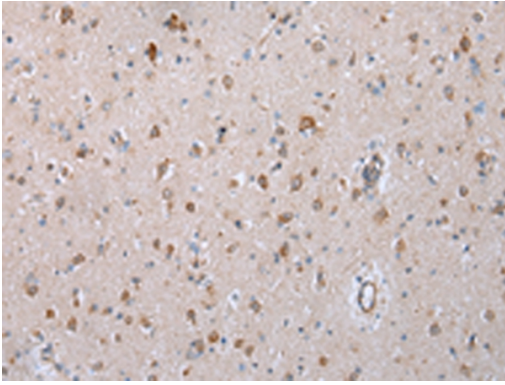
Primary antibody: 1/300 dilution

Secondary antibody: Goat anti rabbit IgG at 1/8000 dilution

Exposure time: 5 minutes



Immunohistochemical analysis of paraffin-embedded Human breast cancer tissue using #43250 at dilution 1/40.



Immunohistochemical analysis of paraffin-embedded Human brain tissue using #43250 at dilution 1/40.

Background

Cytochrome c oxidase (COX), the terminal component of the mitochondrial respiratory chain, catalyzes the electron transfer from reduced cytochrome c to oxygen. This component is a heteromeric complex consisting of 3 catalytic subunits encoded by mitochondrial genes and multiple structural subunits encoded by nuclear genes. The mitochondrially-encoded subunits function in electron transfer, and the nuclear-encoded subunits may function in the regulation and assembly of the complex.

Note: This product is for in vitro research use only