

## UBE2I Antibody

Catalog No: #43252

Orders: [order@signalwayantibody.com](mailto:order@signalwayantibody.com)Support: [tech@signalwayantibody.com](mailto:tech@signalwayantibody.com)

## Description

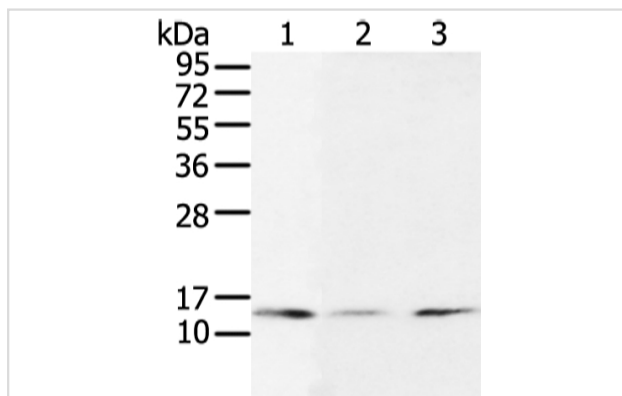
Product Name	UBE2I Antibody
Host Species	Rabbit
Clonality	Polyclonal
Purification	Antigen affinity purification.
Applications	WB IHC
Species Reactivity	Hu Ms Rt
Specificity	The antibody detects endogenous levels of total UBE2I protein.
Immunogen Type	peptide
Immunogen Description	Synthetic peptide of human UBE2I
Target Name	UBE2I
Other Names	P18; UBC9; C358B7.1
Accession No.	Swiss-Prot#: P63279?Gene ID: 7329
Uniprot	P63279
GeneID	7329;
Calculated MW	18kd
Concentration	1.1mg/ml
Formulation	Rabbit IgG in pH7.4 PBS, 0.05% NaN <sub>3</sub> , 40% Glycerol.
Storage	Store at -20°C

## Application Details

Western blotting: 1:200-1:1000

Immunohistochemistry: 1:100-1:200

## Images



Gel: 12%SDS-PAGE

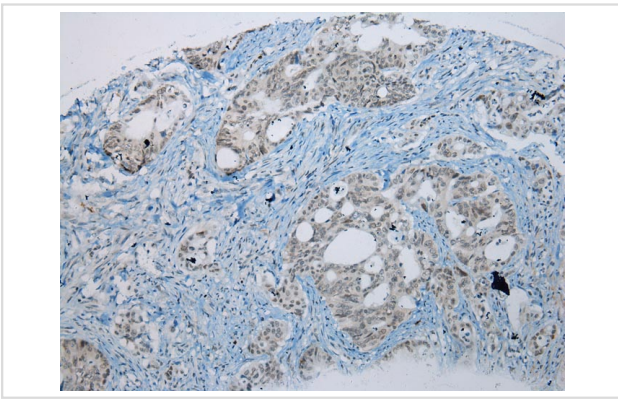
Lysate: 40 µg

Lane 1-3: TM4, hela and 293T cell

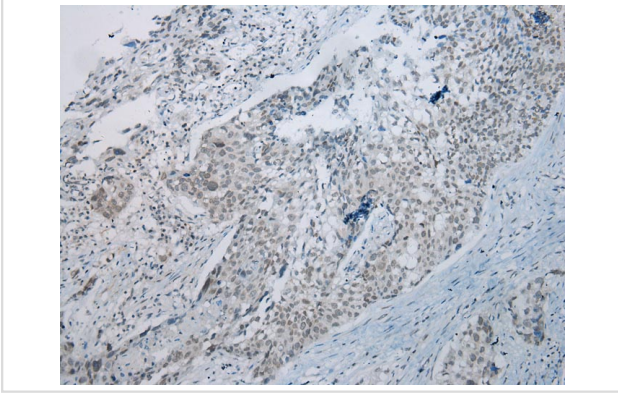
Primary antibody: 1/500 dilution

Secondary antibody: Goat anti rabbit IgG at 1/8000 dilution

Exposure time: 10 seconds



Immunohistochemical analysis of paraffin-embedded Human Colorectal tissue using #43252 at dilution 1/200.



Immunohistochemical analysis of paraffin-embedded Human Lung tissue using #43252 at dilution 1/200.

## Background

The modification of proteins with ubiquitin is an important cellular mechanism for targeting abnormal or short-lived proteins for degradation. Ubiquitination involves at least three classes of enzymes: ubiquitin-activating enzymes, or E1s, ubiquitin-conjugating enzymes, or E2s, and ubiquitin-protein ligases, or E3s. This gene encodes a member of the E2 ubiquitin-conjugating enzyme family. Four alternatively spliced transcript variants encoding the same protein have been found for this gene.?

Note: This product is for in vitro research use only