

CLDN25 Antibody

Catalog No: #43254

Orders: order@signalwayantibody.com

Support: tech@signalwayantibody.com

Description

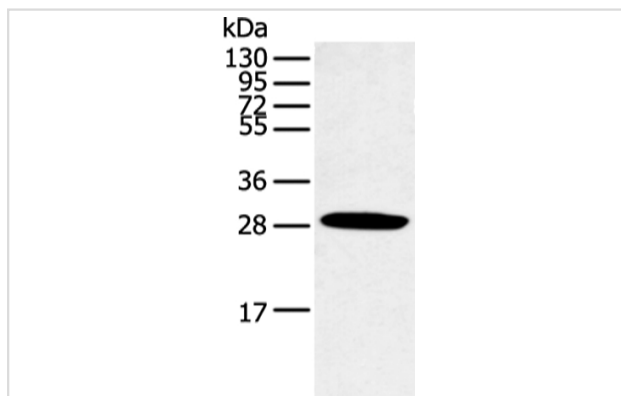
Product Name	CLDN25 Antibody
Host Species	Rabbit
Clonality	Polyclonal
Purification	Antigen affinity purification.
Applications	WB IHC
Species Reactivity	Hu
Specificity	The antibody detects endogenous levels of total CLDN25 protein.
Immunogen Type	peptide
Immunogen Description	Synthetic peptide of human CLDN25
Target Name	CLDN25
Other Names	C9JDP6; claudin-like; hCG1646420; LOC644672
Accession No.	Swiss-Prot#: C9JDP6 Gene ID: 644672
Uniprot	C9JDP6
GeneID	644672;
Calculated MW	25kd
Concentration	0.6mg/ml
Formulation	Rabbit IgG in pH7.4 PBS, 0.05% NaN ₃ , 40% Glycerol.
Storage	Store at -20°C

Application Details

Western blotting: 1:500-1:2000

Immunohistochemistry: 1:100-1:200

Images



Gel: 12%SDS-PAGE

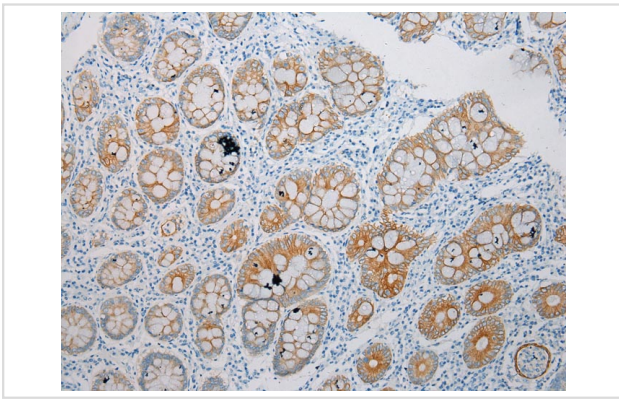
Lysate: 40 µg

Lane: Human normal lung tissue

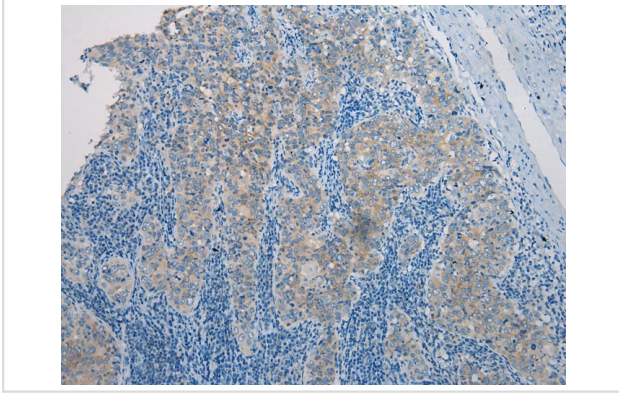
Primary antibody: 1/250 dilution

Secondary antibody: Goat anti rabbit IgG at 1/8000 dilution

Exposure time: 10 seconds



Immunohistochemical analysis of paraffin-embedded Human Colorectal cancer tissue using #43254 at dilution 1/200.



Immunohistochemical analysis of paraffin-embedded Human Cervical cancer tissue using #43254 at dilution 1/200.

Background

This gene encodes a member of the claudin family. Claudins are integral membrane proteins and components of tight junction strands. Tight junction strands serve as a physical barrier to prevent solutes and water from passing freely through the paracellular space between epithelial or endothelial cell sheets, and also play critical roles in maintaining cell polarity and signal transductions.?

Note: This product is for in vitro research use only