

DDX58 Antibody

Catalog No: #43258

Orders: order@signalwayantibody.comSupport: tech@signalwayantibody.com

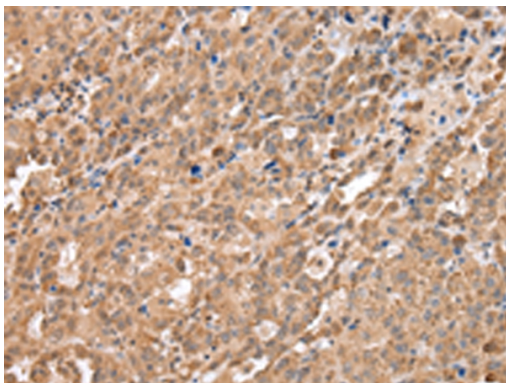
Description

Product Name	DDX58 Antibody
Host Species	Rabbit
Clonality	Polyclonal
Purification	Antigen affinity purification.
Applications	IHC
Species Reactivity	Hu
Specificity	The antibody detects endogenous levels of total DDX58 protein.
Immunogen Type	peptide
Immunogen Description	Synthetic peptide of human DDX58
Target Name	DDX58
Other Names	RIGI; RIG-I; RLR-1; SGMRT2
Accession No.	Swiss-Prot#: O95786Gene ID: 23586
Uniprot	O95786
GeneID	23586;
Concentration	2.6mg/ml
Formulation	Rabbit IgG in pH7.4 PBS, 0.05% NaN ₃ , 40% Glycerol.
Storage	Store at -20°C

Application Details

Immunohistochemistry: 1:25-1:100

Images



Immunohistochemical analysis of paraffin-embedded Human ovarian cancer tissue using #43258 at dilution 1/40,

Background

DEAD box proteins, characterized by the conserved motif Asp-Glu-Ala-Asp (DEAD), are putative RNA helicases which are implicated in a number of cellular processes involving RNA binding and alteration of RNA secondary structure. This gene encodes a protein containing RNA helicase-DEAD box protein motifs and a caspase recruitment domain (CARD). It is involved in viral double-stranded (ds) RNA recognition and the regulation of immune response.

Note: This product is for in vitro research use only