

E2F5 Antibody

Catalog No: #43261

Orders: order@signalwayantibody.comSupport: tech@signalwayantibody.com

Description

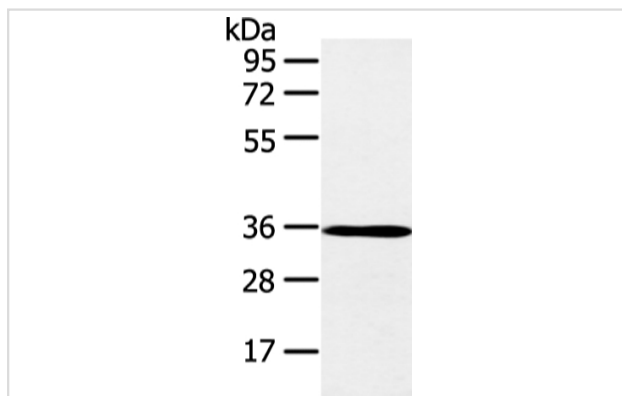
Product Name	E2F5 Antibody
Host Species	Rabbit
Clonality	Polyclonal
Purification	Antigen affinity purification.
Applications	WB IHC
Species Reactivity	Hu Ms
Specificity	The antibody detects endogenous levels of total E2F5 protein.
Immunogen Type	peptide
Immunogen Description	Synthetic peptide of human E2F5
Target Name	E2F5
Other Names	E2F-5
Accession No.	Swiss-Prot#: Q15329Gene ID: 1875
Uniprot	Q15329
GeneID	1875;
Calculated MW	38kd
Concentration	1.6mg/ml
Formulation	Rabbit IgG in pH7.4 PBS, 0.05% NaN ₃ , 40% Glycerol.
Storage	Store at -20°C

Application Details

Western blotting: 1:500-1:2000

Immunohistochemistry: 1:25-1:100

Images



Gel: 6%SDS-PAGE

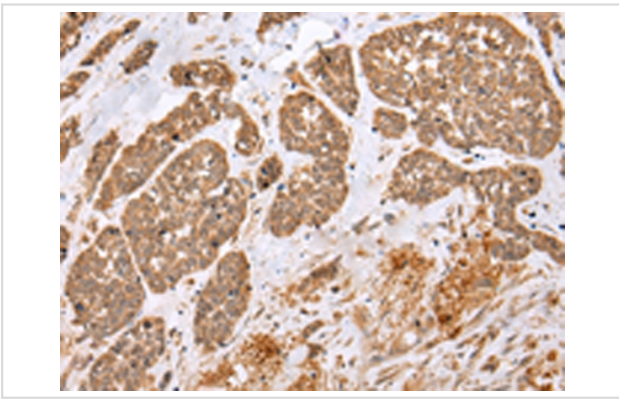
Lysate: 40 µg

Lane 1-2: K562 cell and mouse brain tissue

Primary antibody: 1/400 dilution

Secondary antibody: Goat anti rabbit IgG at 1/8000 dilution

Exposure time: 1 minute



Immunohistochemical analysis of paraffin-embedded Human esophagus cancer tissue using #43261 at dilution 1/25,

Background

The protein encoded by this gene is a member of the E2F family of transcription factors. The E2F family plays a crucial role in the control of cell cycle and action of tumor suppressor proteins and is also a target of the transforming proteins of small DNA tumor viruses. The E2F proteins contain several evolutionarily conserved domains that are present in most members of the family.?

Note: This product is for in vitro research use only