

ECM1 Antibody

Catalog No: #43263

Orders: order@signalwayantibody.com

Support: tech@signalwayantibody.com

Description

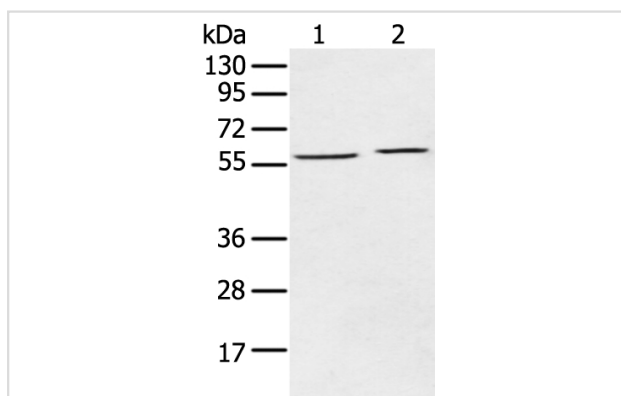
| | |
|-----------------------|---|
| Product Name | ECM1 Antibody |
| Host Species | Rabbit |
| Clonality | Polyclonal |
| Purification | Antigen affinity purification. |
| Applications | WB IHC |
| Species Reactivity | Hu |
| Specificity | The antibody detects endogenous levels of total ECM1 protein. |
| Immunogen Type | peptide |
| Immunogen Description | Synthetic peptide of human ECM1 |
| Target Name | ECM1 |
| Other Names | URBWD |
| Accession No. | Swiss-Prot#: Q16610Gene ID: 1893 |
| Uniprot | Q16610 |
| GeneID | 1893; |
| Calculated MW | 61kd |
| Concentration | 1.8mg/ml |
| Formulation | Rabbit IgG in pH7.4 PBS, 0.05% NaN ₃ , 40% Glycerol. |
| Storage | Store at -20°C |

Application Details

Western blotting: 1:200-1:1000

Immunohistochemistry: 1:25-1:100

Images



Gel: 8%SDS-PAGE

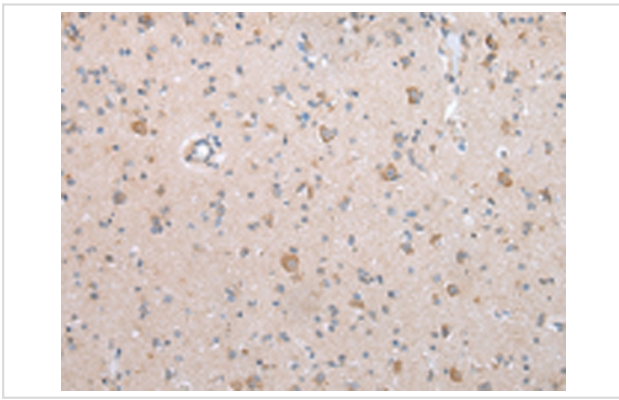
Lysate: 40 µg

Lane 1-2: A549 and A375 cell

Primary antibody: 1/200 dilution

Secondary antibody: Goat anti rabbit IgG at 1/8000 dilution

Exposure time: 10 seconds



Immunohistochemical analysis of paraffin-embedded Human brain tissue using #43263 at dilution 1/20,

Background

This gene encodes a soluble protein that is involved in endochondral bone formation, angiogenesis, and tumor biology. It also interacts with a variety of extracellular and structural proteins, contributing to the maintenance of skin integrity and homeostasis. Mutations in this gene are associated with lipoid proteinosis disorder (also known as hyalinosi cutis et mucosae or Urbach-Wiethe disease) that is characterized by generalized thickening of skin, mucosae and certain viscera. Alternatively spliced transcript variants encoding distinct isoforms have been described for this gene.

Note: This product is for in vitro research use only