

COL15A1 Antibody

Catalog No: #43264

Orders: order@signalwayantibody.comSupport: tech@signalwayantibody.com

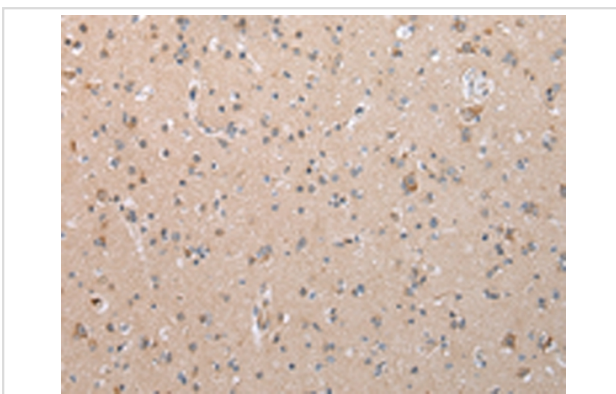
Description

Product Name	COL15A1 Antibody
Host Species	Rabbit
Clonality	Polyclonal
Purification	Antigen affinity purification.
Applications	IHC
Species Reactivity	Hu
Specificity	The antibody detects endogenous levels of total COL15A1 protein.
Immunogen Type	peptide
Immunogen Description	Synthetic peptide of human COL15A1
Target Name	COL15A1
Other Names	COFA1; COL15A1; Collagen alpha-1(XV) chain; collagen type XV proteoglycan; collagen XV, alpha-1 polypeptide
Accession No.	Swiss-Prot#: P39059 Gene ID: 1306
Uniprot	P39059
GeneID	1306;
Concentration	2.3mg/ml
Formulation	Rabbit IgG in pH7.4 PBS, 0.05% NaN ₃ , 40% Glycerol.
Storage	Store at -20°C

Application Details

Immunohistochemistry: 1:10-1:50

Images



Immunohistochemical analysis of paraffin-embedded Human brain tissue using #43264 at dilution 1/35,

Background

This gene encodes the alpha chain of type XV collagen, a member of the FACIT collagen family (fibril-associated collagens with interrupted helices). Type XV collagen has a wide tissue distribution but the strongest expression is localized to basement membrane zones so it may function to adhere

basement membranes to underlying connective tissue stroma. The proteolytically produced C-terminal fragment of type XV collagen is restin, a potentially antiangiogenic protein that is closely related to endostatin. Mouse studies have shown that collagen XV deficiency is associated with muscle and microvessel deterioration.

Note: This product is for in vitro research use only