

SAE1 antibody

Catalog No: #22850

Orders: order@signalwayantibody.com

Support: tech@signalwayantibody.com

Description

Product Name	SAE1 antibody
Host Species	Rabbit
Clonality	Polyclonal
Purification	Purified by antigen-affinity chromatography.
Applications	WB IHC IF
Species Reactivity	Hu
Immunogen Type	Recombinant protein
Immunogen Description	Recombinant protein fragment contain a sequence corresponding to a region within amino acids 3 and 217 of SAE1
Target Name	SAE1
Accession No.	Swiss-Prot:Q9UBE0Gene ID:10055
Uniprot	Q9UBE0
GeneID	10055;
Concentration	0.7mg/ml
Formulation	Supplied in 0.1M Tris-buffered saline with 20% Glycerol (pH7.0). 0.01% Thimerosal was added as a preservative.
Storage	Store at -20°C for long term preservation (recommended). Store at 4°C for short term use.

Application Details

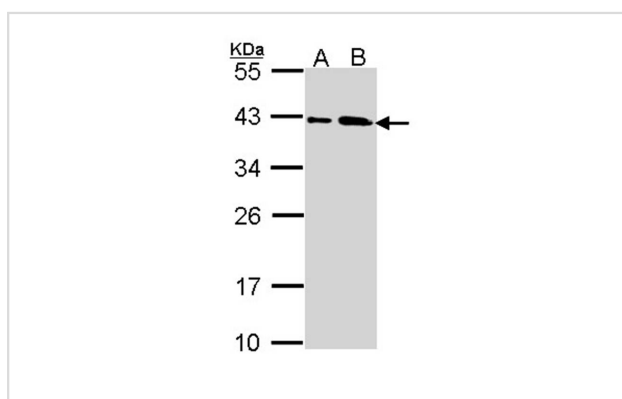
Predicted MW: 38kd

Western blotting: 1:500-1:3000

Immunohistochemistry: 1:100-1:250

Immunofluorescence: 1:100-1:200

Images



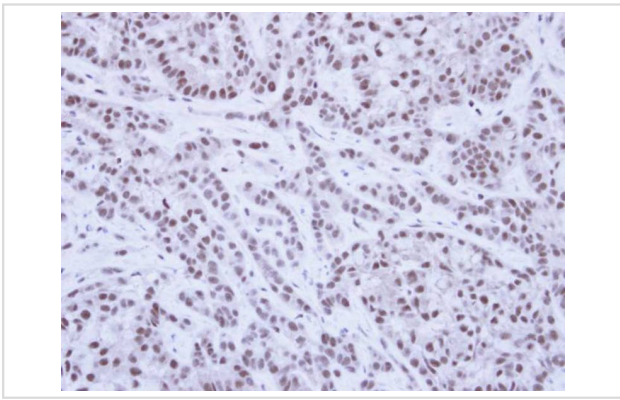
Sample (30 ug of whole cell lysate)

A: A431

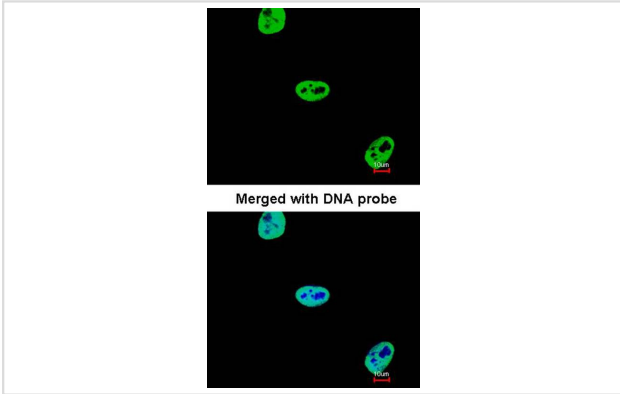
B: H1299

10% SDS PAGE

Primary antibody diluted at 1: 1000



Immunohistochemical analysis of paraffin-embedded A549 Xenograft, using SAE1 antibody at 1: 100 dilution.



Immunofluorescence analysis of paraformaldehyde-fixed HeLa, using SAE1 antibody at 1: 200 dilution.

Note: This product is for in vitro research use only