

EPHA2 Antibody

Catalog No: #43267

Orders: order@signalwayantibody.comSupport: tech@signalwayantibody.com

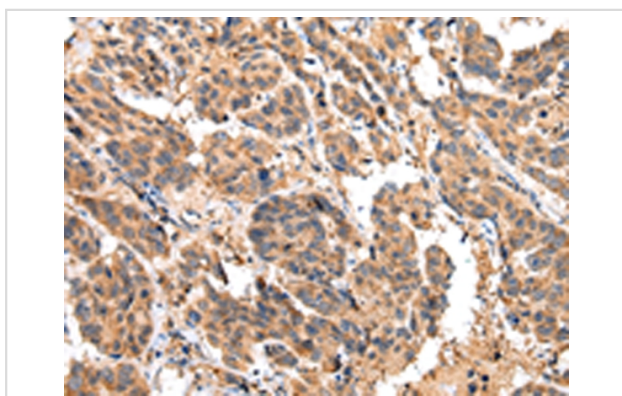
Description

Product Name	EPHA2 Antibody
Host Species	Rabbit
Clonality	Polyclonal
Purification	Antigen affinity purification.
Applications	IHC
Species Reactivity	Hu
Specificity	The antibody detects endogenous levels of total EPHA2 protein.
Immunogen Type	peptide
Immunogen Description	Synthetic peptide of human EPHA2
Target Name	EPHA2
Other Names	ECK; CTPA; ARCC2; CTPP1; CTRCT6
Accession No.	Swiss-Prot#: P29317Gene ID: 1969
Uniprot	P29317
GeneID	1969;
Concentration	1.8mg/ml
Formulation	Rabbit IgG in pH7.4 PBS, 0.05% NaN ₃ , 40% Glycerol.
Storage	Store at -20°C

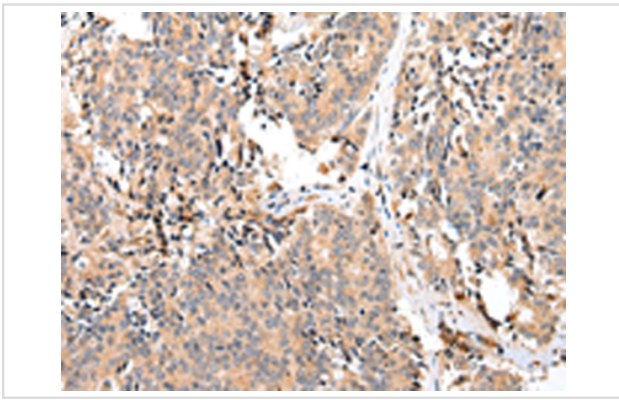
Application Details

Immunohistochemistry: 1:30-1:150

Images



Immunohistochemical analysis of paraffin-embedded Human breast cancer tissue using #43267 at dilution 1/30.



Immunohistochemical analysis of paraffin-embedded Human prostate cancer tissue using #43267 at dilution 1/30.

Background

This gene belongs to the ephrin receptor subfamily of the protein-tyrosine kinase family. EPH and EPH-related receptors have been implicated in mediating developmental events, particularly in the nervous system. Receptors in the EPH subfamily typically have a single kinase domain and an extracellular region containing a Cys-rich domain and 2 fibronectin type III repeats. The ephrin receptors are divided into 2 groups based on the similarity of their extracellular domain sequences and their affinities for binding ephrin-A and ephrin-B ligands. This gene encodes a protein that binds ephrin-A ligands. Mutations in this gene are the cause of certain genetically-related cataract disorders.[]

Note: This product is for in vitro research use only