

## FBLN2 Antibody

Catalog No: #43270

Orders: order@signalwayantibody.com

Support: tech@signalwayantibody.com

## Description

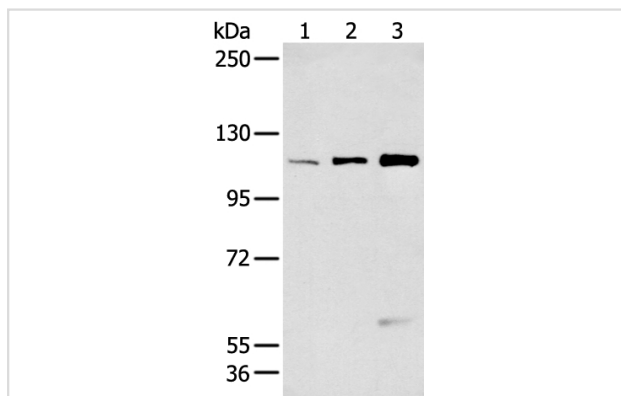
Product Name	FBLN2 Antibody
Host Species	Rabbit
Clonality	Polyclonal
Purification	Antigen affinity purification.
Applications	WB
Species Reactivity	Hu
Specificity	The antibody detects endogenous levels of total FBLN2 protein.
Immunogen Type	peptide
Immunogen Description	Synthetic peptide of human FBLN2
Target Name	FBLN2
Other Names	FBLN2; FIBL-2; fibulin 2; Fibulin-2
Accession No.	Swiss-Prot#: P98095 Gene ID: 2199
Uniprot	P98095
GeneID	2199;
Calculated MW	126kd
Concentration	1mg/ml
Formulation	Rabbit IgG in pH7.4 PBS, 0.05% NaN <sub>3</sub> , 40% Glycerol.
Storage	Store at -20°C

## Application Details

Western blotting: 1:200-1:1000

Immunohistochemistry: 1:20-1:100

## Images



Gel: 6%SDS-PAGE

Lysate: 40 µg

Lane 1-3: HeLa/B£B-A549 and 293T cell

Primary antibody: 1/200 dilution

Secondary antibody: Goat anti rabbit IgG at 1/8000 dilution

Exposure time: 30 seconds

## Background

This gene encodes an extracellular matrix protein, which belongs to the fibulin family. This protein binds various extracellular ligands and calcium. It

may play a role during organ development, in particular, during the differentiation of heart, skeletal and neuronal structures. Alternatively spliced transcript variants encoding different isoforms have been identified.

---

Note: This product is for in vitro research use only