

SLC2A6 Antibody

Catalog No: #43276

Orders: order@signalwayantibody.com

Support: tech@signalwayantibody.com

Description

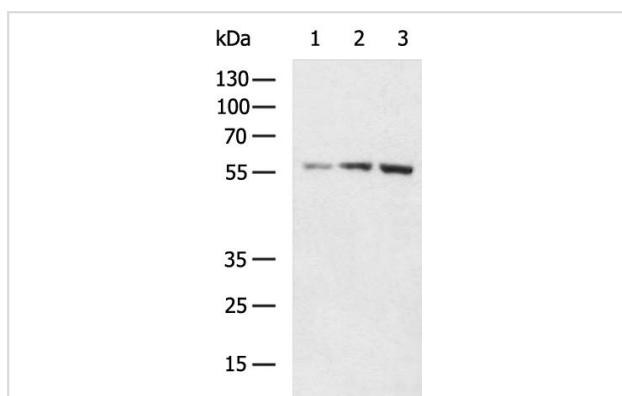
Product Name	SLC2A6 Antibody
Host Species	Rabbit
Clonality	Polyclonal
Purification	Antigen affinity purification.
Applications	WB IHC
Species Reactivity	Human Mouse
Specificity	The antibody detects endogenous levels of total SLC2A6 protein.
Immunogen Description	Synthetic peptide of human SLC2A6
Target Name	SLC2A6
Other Names	GLUT6; GLUT9; HSA011372
Accession No.	Swiss-Prot#: Q9UGQ3 Gene ID: 11182
Uniprot	Q9UGQ3
GeneID	11182;
Calculated MW	54kd
Concentration	0.8 mg/ml
Formulation	Rabbit IgG in pH7.4 PBS, 0.05% NaN ₃ , 40% Glycerol.
Storage	Store at -20°C

Application Details

WB 1:500-1:2000

IHC 1:50-1:200

Images



Gel: 8%SDS-PAGE

Lysate: 40 ug

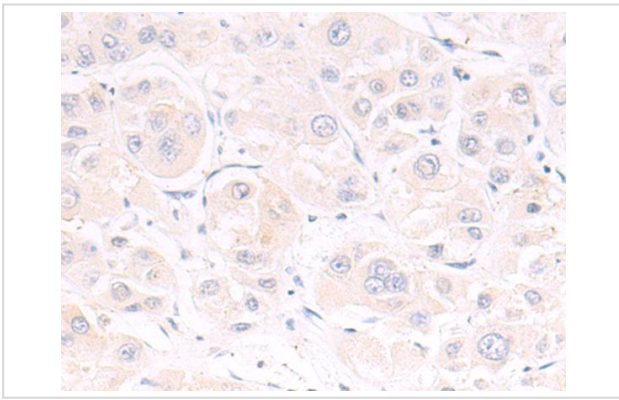
Lane 1-3: 293T, Jurkat, HeLa cell lysates

Primary antibody: (SLC2A6 Antibody) at dilution 1/800

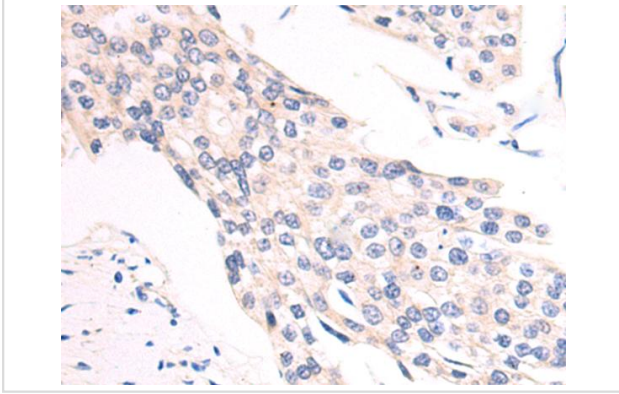
Secondary antibody: (HRP-conjugated

Goat anti rabbit IgG) at 1/5000 dilution

Exposure time: 2 minutes



The image on the left is immunohistochemistry of paraffinembedded Human liver cancer tissue using (SLC2A6 Antibody) at dilution 1/50



The image on the left is immunohistochemistry of paraffinembedded Human breast cancer tissue using (SLC2A6 Antibody) at dilution 1/50

Background

Members of the Glut family may enhance the metabolic activity of tumor cells. Glut6 is part of the third out of three classes of Gluts. Glut6 is mainly expressed in the brain, spleen and peripheral leukocytes. It appears to be regulated by subcellular redistribution, because it is targeted to intracellular compartments by di-leucine motifs, recycling itself in a Dynamin-dependent manner.

Note: This product is for in vitro research use only