

GPC1 Antibody

Catalog No: #43277

Orders: order@signalwayantibody.comSupport: tech@signalwayantibody.com

Description

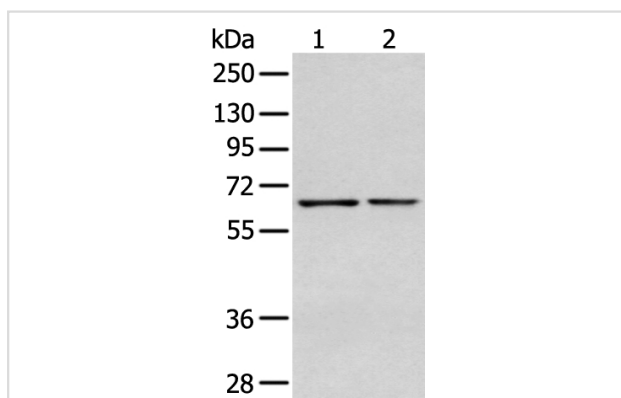
Product Name	GPC1 Antibody
Host Species	Rabbit
Clonality	Polyclonal
Purification	Antigen affinity purification.
Applications	WB IHC
Species Reactivity	Hu
Specificity	The antibody detects endogenous levels of total GPC1 protein.
Immunogen Type	peptide
Immunogen Description	Synthetic peptide of human GPC1
Target Name	GPC1
Other Names	glypican
Accession No.	Swiss-Prot#: P35052Gene ID: 2817
Uniprot	P35052
GeneID	2817;
Calculated MW	62kd
Concentration	1.5mg/ml
Formulation	Rabbit IgG in pH7.4 PBS, 0.05% NaN ₃ , 40% Glycerol.
Storage	Store at -20°C

Application Details

Western blotting: 1:200-1:1000

Immunohistochemistry: 1:25-1:100

Images



Gel: 6%SDS-PAGE

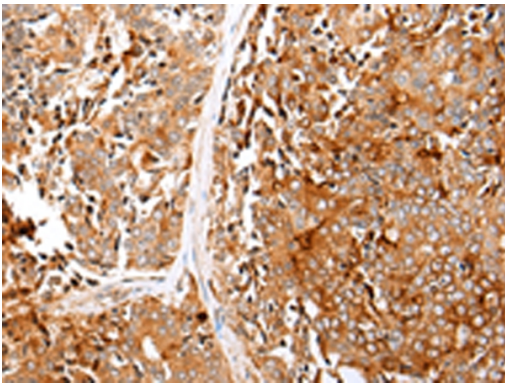
Lysate: 40 µg

Lane 1-2: HEPG2 and Jurkat cell

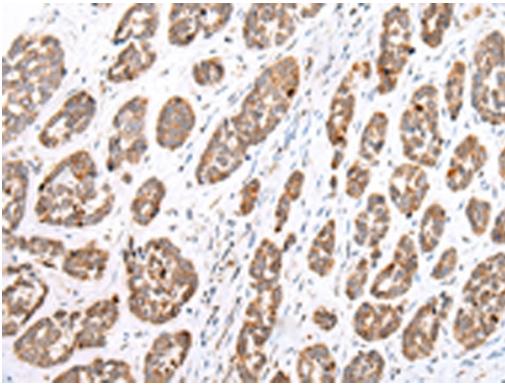
Primary antibody: 1/350 dilution

Secondary antibody: Goat anti rabbit IgG at 1/8000 dilution

Exposure time: 40 seconds



Immunohistochemical analysis of paraffin-embedded Human prostate cancer tissue using #43277 at dilution 1/25.



Immunohistochemical analysis of paraffin-embedded Human esophagus cancer tissue using #43277 at dilution 1/25.

Background

Cell surface heparan sulfate proteoglycans are composed of a membrane-associated protein core substituted with a variable number of heparan sulfate chains. Members of the glypican-related integral membrane proteoglycan family (GRIPS) contain a core protein anchored to the cytoplasmic membrane via a glycosyl phosphatidylinositol linkage. These proteins may play a role in the control of cell division and growth regulation.

Note: This product is for in vitro research use only