

## Description

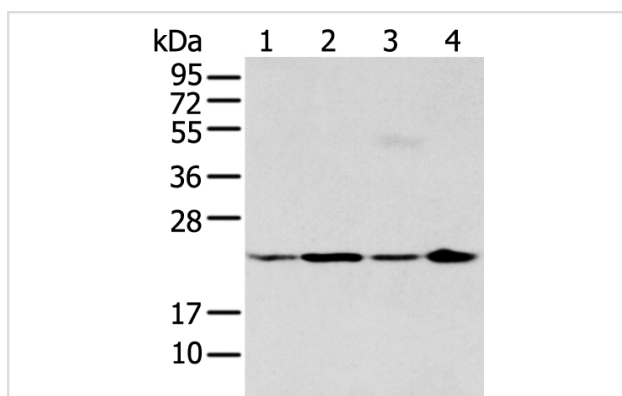
Product Name	BMF Antibody
Host Species	Rabbit
Clonality	Polyclonal
Purification	Antigen affinity purification.
Applications	WB IHC
Species Reactivity	Hu Ms Rt
Specificity	The antibody detects endogenous levels of total BMF protein.
Immunogen Description	Synthetic peptide of human BMF
Target Name	BMF
Other Names	Bcl-2-modifying factor; Bcl2 modifying factor; BMF; FLJ00065
Accession No.	Swiss-Prot#: Q96LC9Gene ID: 90427
Uniprot	Q96LC9
GeneID	90427;
Calculated MW	21kd
Concentration	0.8mg/ml
Formulation	Rabbit IgG in pH7.4 PBS, 0.05% NaN <sub>3</sub> , 40% Glycerol.
Storage	Store at -20°C

## Application Details

Western blotting: 1:200-1:1000

Immunohistochemistry: 1:25-1:100

## Images



Gel: 12%SDS-PAGE

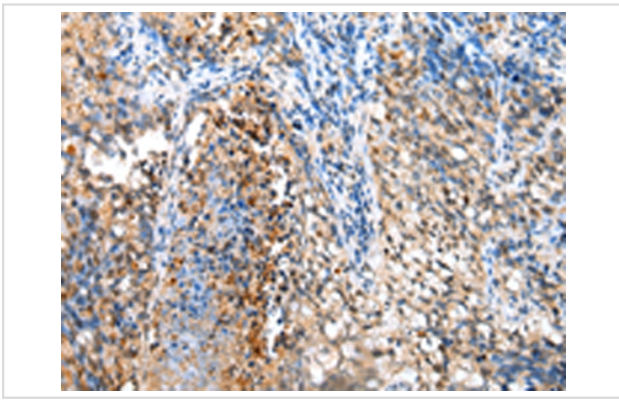
Lysate: 40 µg

Lane 1-4: Hepg2B£B-293TB£B-Hela and Jurkat cell

Primary antibody: 1/200 dilution

Secondary antibody: Goat anti rabbit IgG at 1/8000 dilution

Exposure time: 20 seconds



Immunohistochemical analysis of paraffin-embedded Human lung cancer tissue using #43281 at dilution 1/20,

## Background

The protein encoded by this gene belongs to the BCL2 protein family. BCL2 family members form hetero- or homodimers and act as anti- or pro-apoptotic regulators that are involved in a wide variety of cellular activities. This protein contains a single BCL2 homology domain 3 (BH3), and has been shown to bind BCL2 proteins and function as an apoptotic activator. This protein is found to be sequestered to myosin V motors by its association with dynein light chain 2, which may be important for sensing intracellular damage and triggering apoptosis.

Note: This product is for in vitro research use only