

BCL2L11 Antibody

Catalog No: #43283

Orders: order@signalwayantibody.comSupport: tech@signalwayantibody.com

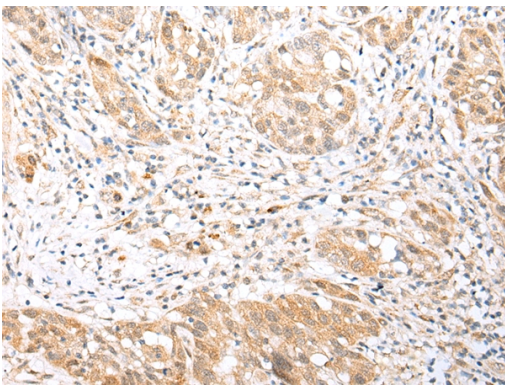
Description

Product Name	BCL2L11 Antibody
Host Species	Rabbit
Clonality	Polyclonal
Purification	Antigen affinity purification.
Applications	IHC
Species Reactivity	Hu Ms Rt
Specificity	The antibody detects endogenous levels of total BCL2L11 protein.
Immunogen Type	peptide
Immunogen Description	Synthetic peptide of human BCL2L11
Target Name	BCL2L11
Other Names	BAM; BIM; BOD
Accession No.	Swiss-Prot#: O43521Gene ID: 10018
Uniprot	O43521
GeneID	10018;
Concentration	1.8mg/ml
Formulation	Rabbit IgG in pH7.4 PBS, 0.05% NaN ₃ , 40% Glycerol.
Storage	Store at -20°C

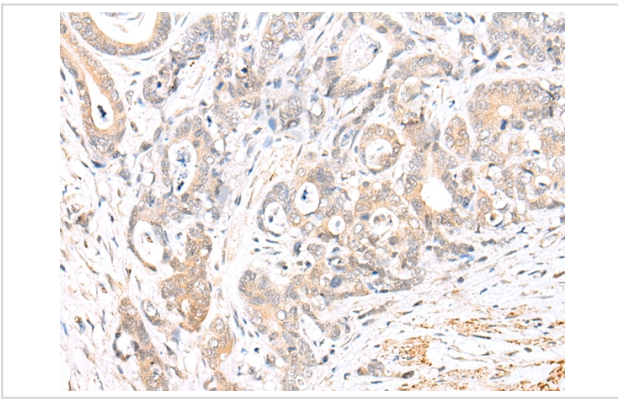
Application Details

Immunohistochemistry: 1:25-1:100

Images



Immunohistochemical analysis of paraffin-embedded Human ovarian cancer tissue using #43283 at dilution 1/30.



Immunohistochemical analysis of paraffin-embedded Human gastric cancer tissue using #43283 at dilution 1/30.

Background

The protein encoded by this gene belongs to the BCL-2 protein family. BCL-2 family members form hetero- or homodimers and act as anti- or pro-apoptotic regulators that are involved in a wide variety of cellular activities. The protein encoded by this gene contains a Bcl-2 homology domain 3 (BH3). It has been shown to interact with other members of the BCL-2 protein family and to act as an apoptotic activator. The expression of this gene can be induced by nerve growth factor (NGF), as well as by the forkhead transcription factor FKHR-L1, which suggests a role of this gene in neuronal and lymphocyte apoptosis. Transgenic studies of the mouse counterpart suggested that this gene functions as an essential initiator of apoptosis in thymocyte-negative selection. Several alternatively spliced transcript variants of this gene have been identified.

Note: This product is for in vitro research use only