

CCNG1 Antibody

Catalog No: #43289

Orders: order@signalwayantibody.comSupport: tech@signalwayantibody.com

Description

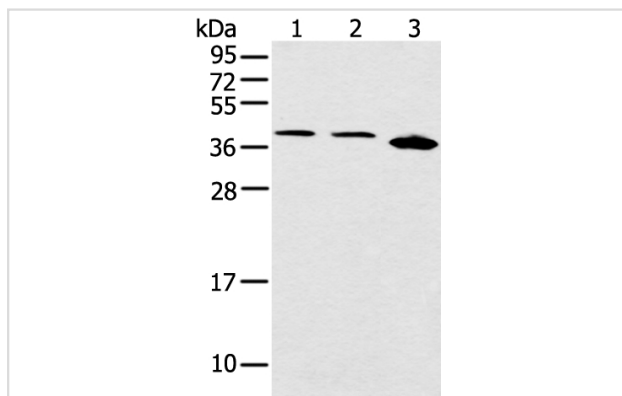
Product Name	CCNG1 Antibody
Host Species	Rabbit
Clonality	Polyclonal
Purification	Antigen affinity purification.
Applications	WB IHC
Species Reactivity	Hu
Specificity	The antibody detects endogenous levels of total CCNG1 protein.
Immunogen Type	peptide
Immunogen Description	Synthetic peptide of human CCNG1
Target Name	CCNG1
Other Names	CCNG
Accession No.	Swiss-Prot#: P51959Gene ID: 900
Uniprot	P51959
GeneID	900;
Calculated MW	34kd
Concentration	0.7mg/ml
Formulation	Rabbit IgG in pH7.4 PBS, 0.05% NaN ₃ , 40% Glycerol.
Storage	Store at -20°C

Application Details

Western blotting: 1:500-1:2000

Immunohistochemistry: 1:100-1:200

Images



Gel: 12%SDS-PAGE

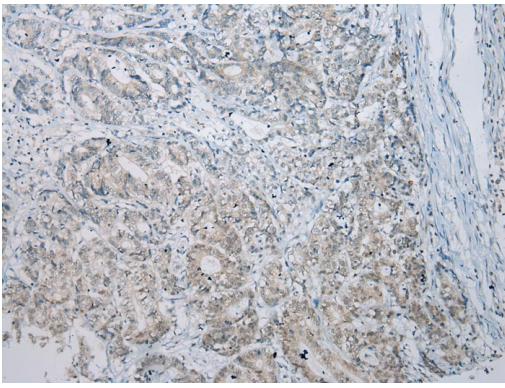
Lysate: 40 µg

Lane 1-3: JurkatB β B γ Hela and 231 cell

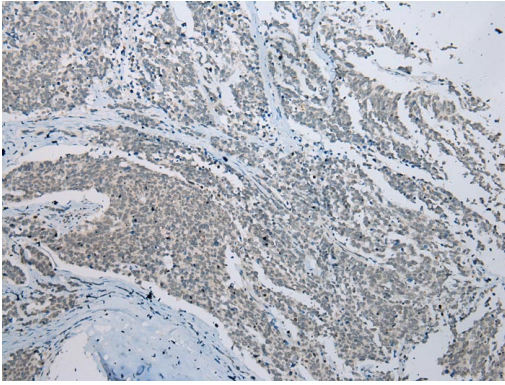
Primary antibody: 1/400 dilution

Secondary antibody: Goat anti rabbit IgG at 1/8000 dilution

Exposure time: 1 minute



Immunohistochemical analysis of paraffin-embedded Human Gastric cancer tissue using #43289 at dilution 1/200,



Immunohistochemical analysis of paraffin-embedded Human Brain cancer tissue using #43289 at dilution 1/200,

Background

The eukaryotic cell cycle is governed by cyclin-dependent protein kinases (CDKs) whose activities are regulated by cyclins and CDK inhibitors. The protein encoded by this gene is a member of the cyclin family and contains the cyclin box. The encoded protein lacks the protein destabilizing (PEST) sequence that is present in other family members. Transcriptional activation of this gene can be induced by tumor protein p53. Two transcript variants encoding the same protein have been identified for this gene.

Note: This product is for in vitro research use only