

CCNG2 Antibody

Catalog No: #43290

Orders: order@signalwayantibody.comSupport: tech@signalwayantibody.com

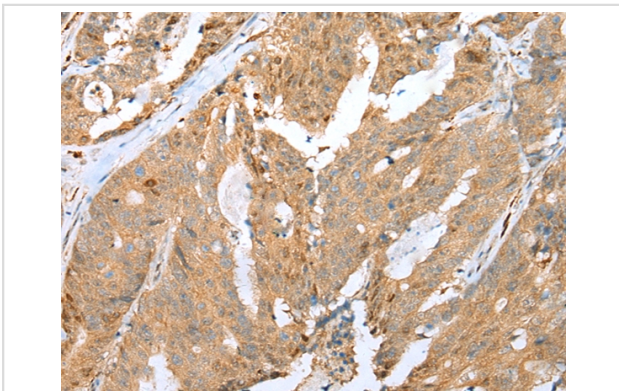
Description

Product Name	CCNG2 Antibody
Host Species	Rabbit
Clonality	Polyclonal
Purification	Antigen affinity purification.
Applications	IHC
Species Reactivity	Hu Ms
Specificity	The antibody detects endogenous levels of total CCNG2 protein.
Immunogen Type	peptide
Immunogen Description	Synthetic peptide of human CCNG2
Target Name	CCNG2
Other Names	CCNG2; cyclin G2; Cyclin-G2
Accession No.	Swiss-Prot#: Q16589Gene ID: 901
Uniprot	Q16589
GeneID	901;
Concentration	1mg/ml
Formulation	Rabbit IgG in pH7.4 PBS, 0.05% NaN ₃ , 40% Glycerol.
Storage	Store at -20°C

Application Details

Immunohistochemistry: 1:25-1:100

Images



Immunohistochemical analysis of paraffin-embedded Human colorectal cancer tissue using #43290 at dilution 1/20,

Background

The eukaryotic cell cycle is governed by cyclin-dependent protein kinases (CDKs) whose activities are regulated by cyclins and CDK inhibitors. The 8 species of cyclins reported in mammals, cyclins A through H, share a conserved amino acid sequence of about 90 residues called the cyclin box. The amino acid sequence of cyclin G is well conserved among mammals. The nucleotide sequence of cyclin G1 and cyclin G2 are 53% identical. Unlike cyclin G1, cyclin G2 contains a C-terminal PEST protein destabilization motif, suggesting that cyclin G2 expression is tightly regulated through the cell

cycle.

Note: This product is for in vitro research use only