

CCNH Antibody

Catalog No: #43291

Orders: order@signalwayantibody.com

Support: tech@signalwayantibody.com

Description

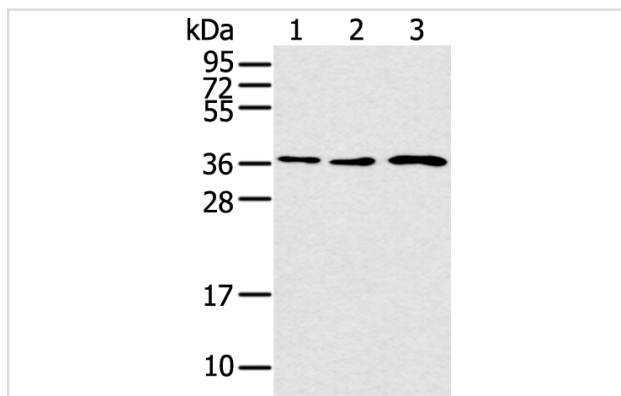
Product Name	CCNH Antibody
Host Species	Rabbit
Clonality	Polyclonal
Purification	Antigen affinity purification.
Applications	WB
Species Reactivity	Hu
Specificity	The antibody detects endogenous levels of total CCNH protein.
Immunogen Type	peptide
Immunogen Description	Synthetic peptide of human CCNH
Target Name	CCNH
Other Names	CAK; p34; p37; Cych
Accession No.	Swiss-Prot#: P51946 Gene ID: 902
Uniprot	P51946
GeneID	902;
Calculated MW	38kd
Concentration	0.9mg/ml
Formulation	Rabbit IgG in pH7.4 PBS, 0.05% NaN ₃ , 40% Glycerol.
Storage	Store at -20°C

Application Details

Western blotting: 1:200-1:1000

Immunohistochemistry: 1:60-1:450

Images



Gel: 12%SDS-PAGE

Lysate: 40 µg

Lane 1-3: 231BEB-Raji and K562 cell

Primary antibody: 1/200 dilution

Secondary antibody: Goat anti rabbit IgG at 1/8000 dilution

Exposure time: 2 minutes

Background

The protein encoded by this gene belongs to the highly conserved cyclin family, whose members are characterized by a dramatic periodicity in protein

abundance through the cell cycle. Cyclins function as regulators of CDK kinases. Different cyclins exhibit distinct expression and degradation patterns which contribute to the temporal coordination of each mitotic event. This cyclin forms a complex with CDK7 kinase and ring finger protein MAT1. The kinase complex is able to phosphorylate CDK2 and CDC2 kinases, thus functions as a CDK-activating kinase (CAK). This cyclin and its kinase partner are components of TFIIH, as well as RNA polymerase II protein complexes.

Note: This product is for in vitro research use only