

## LAMP1 Antibody

Catalog No: #43295

Orders: [order@signalwayantibody.com](mailto:order@signalwayantibody.com)Support: [tech@signalwayantibody.com](mailto:tech@signalwayantibody.com)

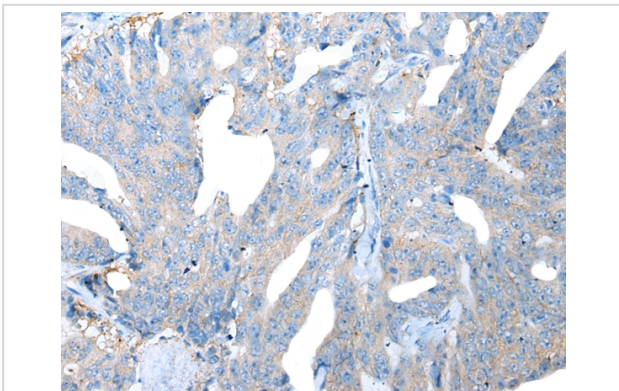
## Description

Product Name	LAMP1 Antibody
Host Species	Rabbit
Clonality	Polyclonal
Purification	Antigen affinity purification.
Applications	IHC
Species Reactivity	Hu
Specificity	The antibody detects endogenous levels of total LAMP1 protein.
Immunogen Type	peptide
Immunogen Description	Synthetic peptide of human LAMP1
Target Name	LAMP1
Other Names	LAMPA; CD107a; LGP120
Accession No.	Swiss-Prot#: P11279Gene ID: 3916
Uniprot	P11279
GeneID	3916;
Concentration	1mg/ml
Formulation	Rabbit IgG in pH7.4 PBS, 0.05% NaN <sub>3</sub> , 40% Glycerol.
Storage	Store at -20°C

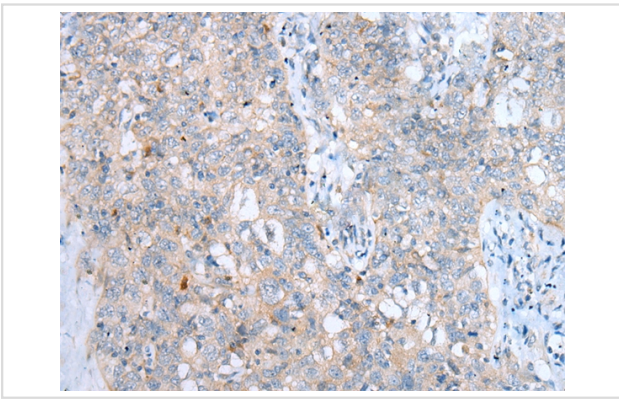
## Application Details

Immunohistochemistry: 1:25-1:100

## Images



Immunohistochemical analysis of paraffin-embedded Human colorectal cancer tissue using #43295 at dilution 1/20.



Immunohistochemical analysis of paraffin-embedded Human esophagus cancer tissue using #43295 at dilution 1/20.

## Background

The protein encoded by this gene is a member of a family of membrane glycoproteins. This glycoprotein provides selectins with carbohydrate ligands. It may also play a role in tumor cell metastasis.

Note: This product is for in vitro research use only