

DCX Antibody

Catalog No: #43298

Orders: order@signalwayantibody.com

Support: tech@signalwayantibody.com

Description

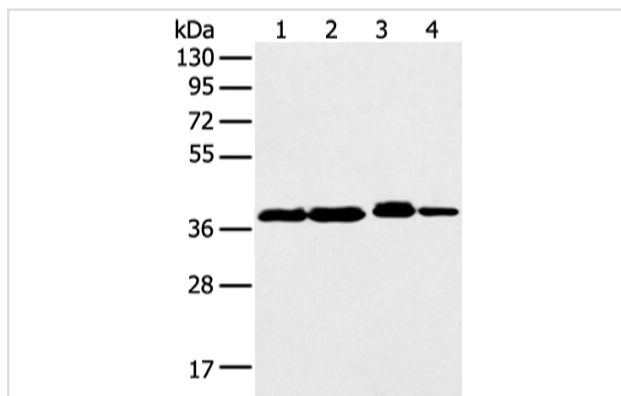
Product Name	DCX Antibody
Host Species	Rabbit
Clonality	Polyclonal
Purification	Antigen affinity purification.
Applications	WB IHC
Species Reactivity	Hu
Specificity	The antibody detects endogenous levels of total DCX protein.
Immunogen Type	peptide
Immunogen Description	Synthetic peptide of human DCX
Target Name	DCX
Other Names	DC; DBCN; LISX; SCLH; XLIS
Accession No.	Swiss-Prot#: O43602 Gene ID: 1641
Uniprot	O43602
GeneID	1641;
Calculated MW	49kd
Concentration	2mg/ml
Formulation	Rabbit IgG in pH7.4 PBS, 0.05% NaN ₃ , 40% Glycerol.
Storage	Store at -20°C

Application Details

Western blotting: 1:500-1:2000

Immunohistochemistry: 1:20-1:100

Images



Gel: 8%SDS-PAGE

Lysate: 40 µg

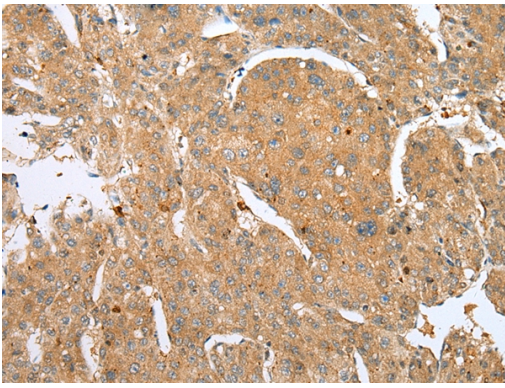
Lane 1-4: Human fetal brain tissue and

293T/B-1/K562/Jurkat cell

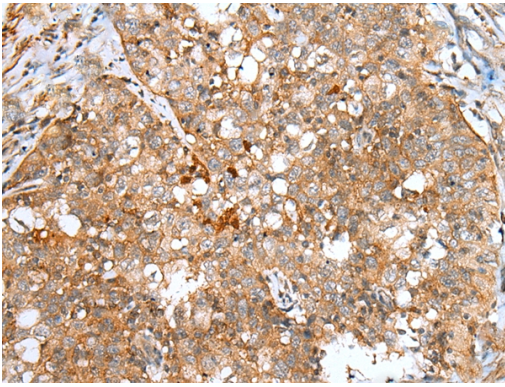
Primary antibody: 1/500 dilution

Secondary antibody: Goat anti rabbit IgG at 1/8000 dilution

Exposure time: 10 seconds



Immunohistochemical analysis of paraffin-embedded Human liver cancer tissue using #43298 at dilution 1/30.



Immunohistochemical analysis of paraffin-embedded Human esophagus cancer tissue using #43298 at dilution 1/30.

Background

This gene encodes a member of the doublecortin family. The protein encoded by this gene is a cytoplasmic protein and contains two doublecortin domains, which bind microtubules. In the developing cortex, cortical neurons must migrate over long distances to reach the site of their final differentiation. The encoded protein appears to direct neuronal migration by regulating the organization and stability of microtubules. In addition, the encoded protein interacts with LIS1, the regulatory gamma subunit of platelet activating factor acetylhydrolase, and this interaction is important to proper microtubule function in the developing cortex.

Note: This product is for in vitro research use only