

DEK Antibody

Catalog No: #43299

Orders: order@signalwayantibody.comSupport: tech@signalwayantibody.com

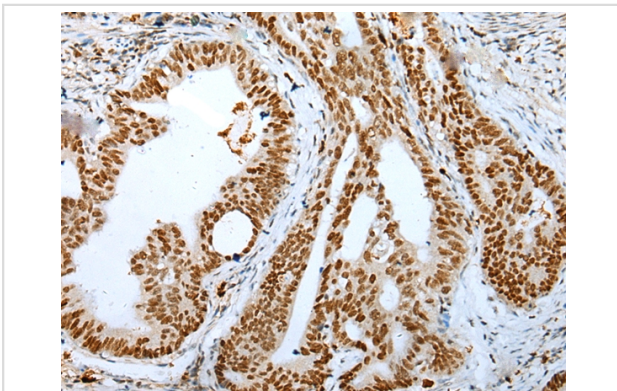
Description

Product Name	DEK Antibody
Host Species	Rabbit
Clonality	Polyclonal
Purification	Antigen affinity purification.
Applications	IHC
Species Reactivity	Hu
Specificity	The antibody detects endogenous levels of total DEK protein.
Immunogen Type	peptide
Immunogen Description	Synthetic peptide of human DEK
Target Name	DEK
Other Names	D6S231E
Accession No.	Swiss-Prot#: P35659 Gene ID: 7913
Uniprot	P35659
GeneID	7913;
Concentration	1.7mg/ml
Formulation	Rabbit IgG in pH7.4 PBS, 0.05% NaN ₃ , 40% Glycerol.
Storage	Store at -20°C

Application Details

Immunohistochemistry: 1:25-1:100

Images



Immunohistochemical analysis of paraffin-embedded Human gastric cancer tissue using #43299 at dilution 1/25,

Background

This gene encodes a protein with one SAP domain. This protein binds to cruciform and superhelical DNA and induces positive supercoils into closed circular DNA, and is also involved in splice site selection during mRNA processing. Chromosomal aberrations involving this region, increased expression of this gene, and the presence of antibodies against this protein are all associated with various diseases. Two transcript variants encoding different isoforms have been found for this gene.

Note: This product is for in vitro research use only