

MAFA Antibody

Catalog No: #43301

Orders: order@signalwayantibody.comSupport: tech@signalwayantibody.com

Description

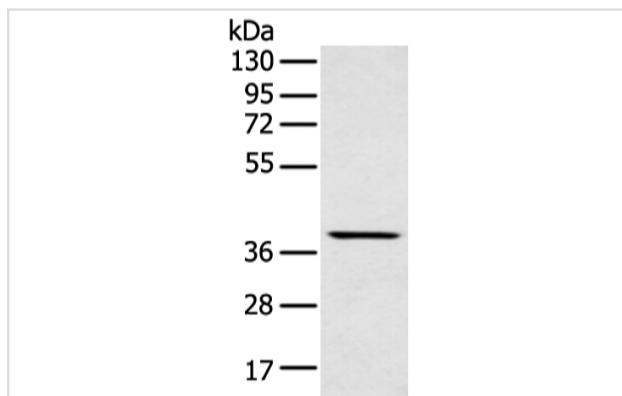
Product Name	MAFA Antibody
Host Species	Rabbit
Clonality	Polyclonal
Purification	Antigen affinity purification.
Applications	WB IHC
Species Reactivity	Hu Ms
Specificity	The antibody detects endogenous levels of total MAFA protein.
Immunogen Type	peptide
Immunogen Description	Synthetic peptide of human MAFA
Target Name	MAFA
Other Names	hMafA; RIPE3b1
Accession No.	Swiss-Prot#: Q8NHW3Gene ID: 389692
Uniprot	Q8NHW3
GeneID	389692;
Calculated MW	37kd
Concentration	1.4mg/ml
Formulation	Rabbit IgG in pH7.4 PBS, 0.05% NaN ₃ , 40% Glycerol.
Storage	Store at -20°C

Application Details

Western blotting: 1:500-1:2000

Immunohistochemistry: 1:25-1:100

Images



Gel: 8%SDS-PAGE

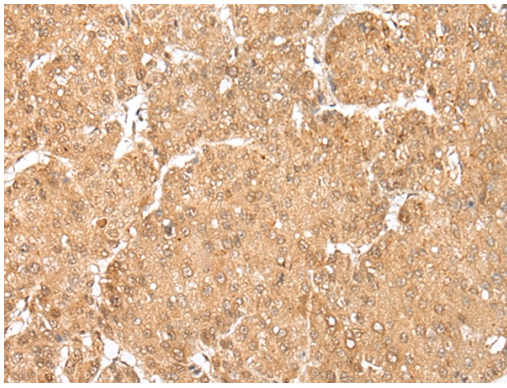
Lysate: 40 µg

Lane: Mouse muscle tissue

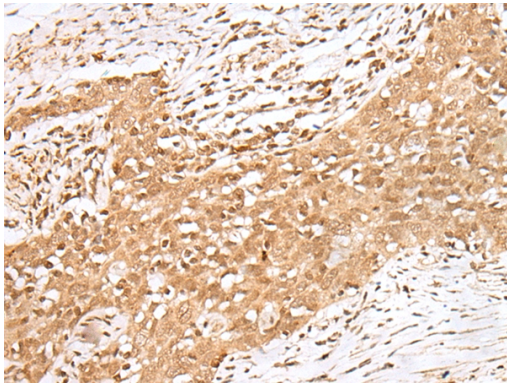
Primary antibody: 1/400 dilution

Secondary antibody: Goat anti rabbit IgG at 1/8000 dilution

Exposure time: 1 minute



Immunohistochemical analysis of paraffin-embedded Human liver cancer tissue using #43301 at dilution 1/20.



Immunohistochemical analysis of paraffin-embedded Human esophagus cancer tissue using #43301 at dilution 1/20.

Background

Members of the Maf family of basic region/leucine zipper (bZIP) transcription factors affect transcription in either a positive or negative fashion, depending on their particular protein partner and the context of the target promoter. c-Maf (Maf-2) and the closely related family members MAFA acts as a transcriptional factor. Specifically binds the insulin enhancer element RIPE3b and activates insulin gene expression. Cooperates synergistically with NEUROD1 and PDX1. Phosphorylation by GSK3 increases its transcriptional activity and is required for its oncogenic activity.

Note: This product is for in vitro research use only