

A2M Antibody

Catalog No: #43304

Orders: order@signalwayantibody.comSupport: tech@signalwayantibody.com

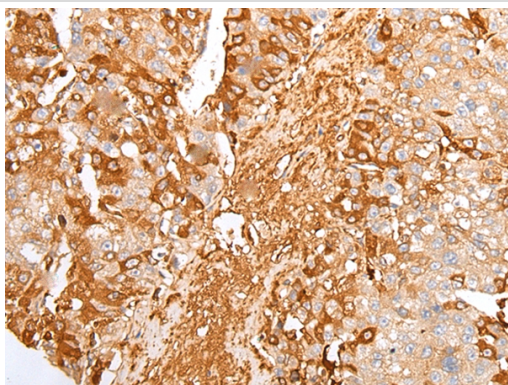
Description

Product Name	A2M Antibody
Host Species	Rabbit
Clonality	Polyclonal
Purification	Antigen affinity purification.
Applications	IHC
Species Reactivity	Hu
Specificity	The antibody detects endogenous levels of total A2M protein.
Immunogen Type	peptide
Immunogen Description	Synthetic peptide of human A2M
Target Name	A2M
Other Names	A2MD; CPAMD5; FWP007; S863-7
Accession No.	Swiss-Prot#: P01023Gene ID: 2
Uniprot	P01023
GeneID	2;
Concentration	1.4mg/ml
Formulation	Rabbit IgG in pH7.4 PBS, 0.05% NaN ₃ , 40% Glycerol.
Storage	Store at -20°C

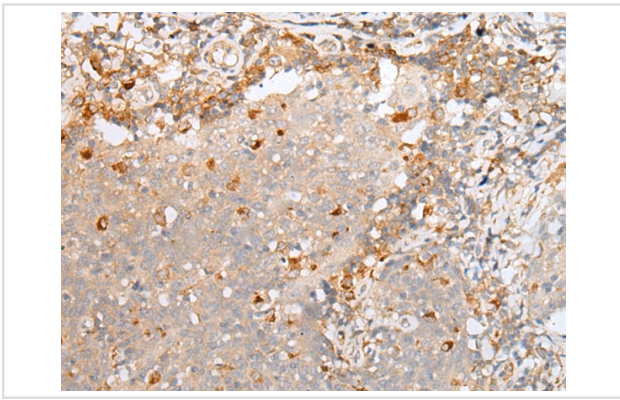
Application Details

Immunohistochemistry: 1:25-1:100

Images



Immunohistochemical analysis of paraffin-embedded Human liver cancer tissue using #43304 at dilution 1/20.



Immunohistochemical analysis of paraffin-embedded Human cervical cancer tissue using #43304 at dilution 1/20.

Background

Alpha-2-macroglobulin is a protease inhibitor and cytokine transporter. It inhibits many proteases, including trypsin, thrombin and collagenase. A2M is implicated in Alzheimer disease (AD) due to its ability to mediate the clearance and degradation of A-beta, the major component of beta-amyloid deposits.?

Note: This product is for in vitro research use only