

alkaline phosphatase(intestinal) antibody

Catalog No: #22854

Orders: order@signalwayantibody.com

Support: tech@signalwayantibody.com

Description

| | |
|-----------------------|--|
| Product Name | alkaline phosphatase(intestinal) antibody |
| Host Species | Rabbit |
| Clonality | Polyclonal |
| Purification | Purified by antigen-affinity chromatography. |
| Applications | WB IHC |
| Species Reactivity | Hu |
| Immunogen Type | Recombinant protein |
| Immunogen Description | Recombinant protein fragment contain a sequence corresponding to a region within amino acids 3 and 216 of alkaline phosphatase(intestinal) |
| Target Name | alkaline phosphatase(intestinal) |
| Accession No. | Swiss-Prot:P09923Gene ID:248 |
| Uniprot | P09923 |
| GeneID | 248; |
| Concentration | 1mg/ml |
| Formulation | Supplied in 0.1M Tris-buffered saline with 10% Glycerol (pH7.0). 0.01% Thimerosal was added as a preservative. |
| Storage | Store at -20°C for long term preservation (recommended). Store at 4°C for short term use. |

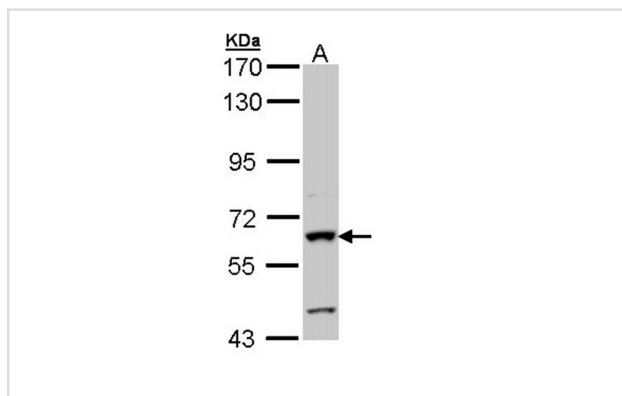
Application Details

Predicted MW: 57kd

Western blotting: 1:500-1:3000

Immunohistochemistry: 1:100-1:500

Images

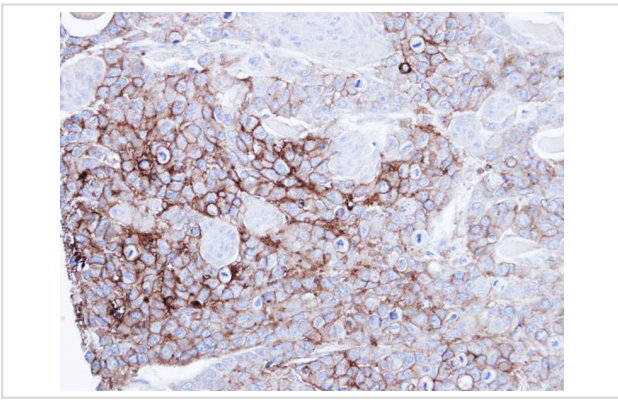


Sample (30 ug of whole cell lysate)

A: Hep G2

7.5% SDS PAGE

Primary antibody diluted at 1: 1000



Immunohistochemical analysis of paraffin-embedded SG xenograft, using alkaline phosphatase(intestinal) antibody at 1: 100 dilution.

Background

There are at least four distinct but related alkaline phosphatases: intestinal, placental, placental-like, and liver/bone/kidney (tissue non-specific). The intestinal alkaline phosphatase gene encodes a digestive brush-border enzyme. This enzyme is upregulated during small intestinal epithelial cell differentiation. [provided by RefSeq]

Note: This product is for in vitro research use only