

NPHS1 Antibody

Catalog No: #43306

Orders: order@signalwayantibody.comSupport: tech@signalwayantibody.com

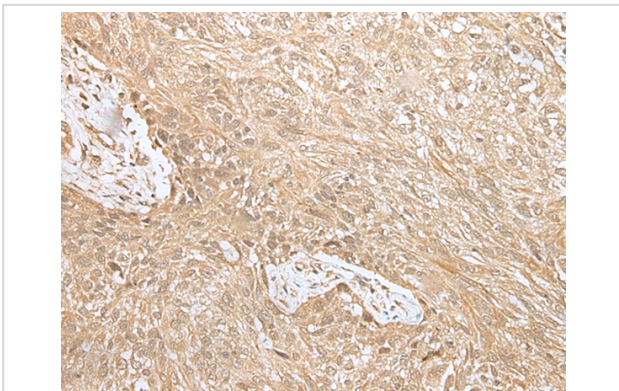
Description

Product Name	NPHS1 Antibody
Host Species	Rabbit
Clonality	Polyclonal
Purification	Antigen affinity purification.
Applications	IHC
Species Reactivity	Hu
Specificity	The antibody detects endogenous levels of total NPHS1 protein.
Immunogen Type	peptide
Immunogen Description	Synthetic peptide of human NPHS1
Target Name	NPHS1
Other Names	CNF; NPHN; nephrin
Accession No.	Swiss-Prot#: O60500Gene ID: 4868
Uniprot	O60500
GeneID	4868;
Concentration	2mg/ml
Formulation	Rabbit IgG in pH7.4 PBS, 0.05% NaN ₃ , 40% Glycerol.
Storage	Store at -20°C

Application Details

Immunohistochemistry: 1:25-1:100

Images



Immunohistochemical analysis of paraffin-embedded Human lung cancer tissue using #43306 at dilution 1/30,

Background

This gene encodes a member of the immunoglobulin family of cell adhesion molecules that functions in the glomerular filtration barrier in the kidney. The gene is primarily expressed in renal tissues, and the protein is a type-1 transmembrane protein found at the slit diaphragm of glomerular podocytes. The slit diaphragm is thought to function as an ultrafilter to exclude albumin and other plasma macromolecules in the formation of urine. Mutations in this gene result in Finnish-type congenital nephrosis 1, characterized by severe proteinuria and loss of the slit diaphragm and foot

processes.

Note: This product is for in vitro research use only