

KLRC2 Antibody

Catalog No: #43309

Orders: order@signalwayantibody.comSupport: tech@signalwayantibody.com

Description

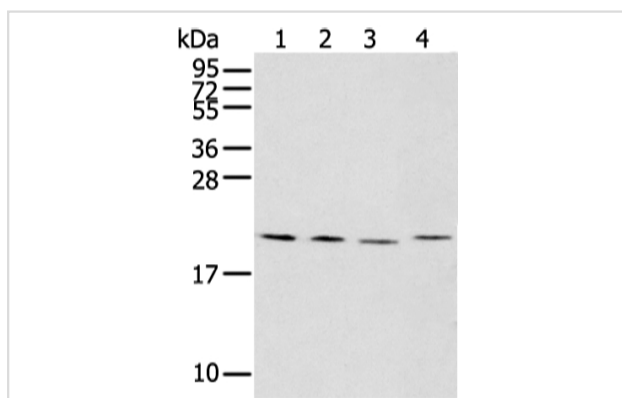
| | |
|-----------------------|---|
| Product Name | KLRC2 Antibody |
| Host Species | Rabbit |
| Clonality | Polyclonal |
| Purification | Antigen affinity purification. |
| Applications | WB |
| Species Reactivity | Hu |
| Specificity | The antibody detects endogenous levels of total KLRC2 protein. |
| Immunogen Type | peptide |
| Immunogen Description | Synthetic peptide of human KLRC2 |
| Target Name | KLRC2 |
| Other Names | NKG2C; CD159c; NKG2-C |
| Accession No. | Swiss-Prot#: P26717 Gene ID: 3822 |
| Uniprot | P26717 |
| GeneID | 3822; |
| Calculated MW | 26kd |
| Concentration | 1.8mg/ml |
| Formulation | Rabbit IgG in pH7.4 PBS, 0.05% NaN ₃ , 40% Glycerol. |
| Storage | Store at -20°C |

Application Details

Western blotting: 1:200-1:1000

Immunohistochemistry: 1:25-1:100

Images



Gel: 12%SDS-PAGE

Lysate: 40 µg

Lane 1-4: K562B- JurkatB- MCF-7 and 293T cell

Primary antibody: 1/200 dilution

Secondary antibody: Goat anti rabbit IgG at 1/8000 dilution

Exposure time: 1 minute

Background

Natural killer (NK) cells are lymphocytes that can mediate lysis of certain tumor cells and virus-infected cells without previous activation. They can also

regulate specific humoral and cell-mediated immunity. NK cells preferentially express several calcium-dependent (C-type) lectins, which have been implicated in the regulation of NK cell function. The group, designated KLRC (NKG2) are expressed primarily in natural killer (NK) cells and encodes a family of transmembrane proteins characterized by a type II membrane orientation (extracellular C terminus) and the presence of a C-type lectin domain.

Note: This product is for in vitro research use only