

## NANOS1 Antibody

Catalog No: #43311

Orders: order@signalwayantibody.com

Support: tech@signalwayantibody.com

## Description

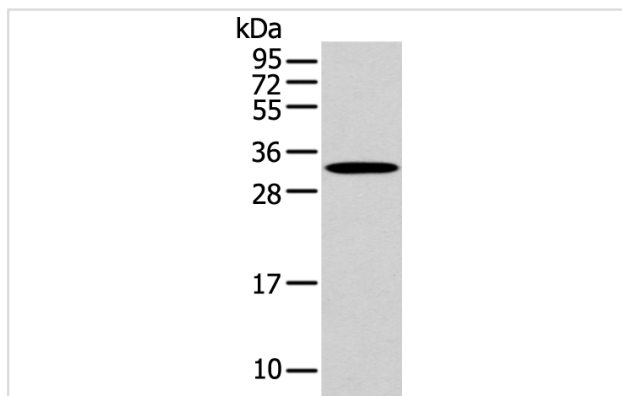
Product Name	NANOS1 Antibody
Host Species	Rabbit
Clonality	Polyclonal
Purification	Antigen affinity purification.
Applications	WB
Species Reactivity	Hu Ms
Specificity	The antibody detects endogenous levels of total NANOS1 protein.
Immunogen Type	peptide
Immunogen Description	Synthetic peptide of human NANOS1
Target Name	NANOS1
Other Names	NOS1; SPGF12
Accession No.	Swiss-Prot#: Q8WY41 Gene ID: 340719
Uniprot	Q8WY41
GeneID	340719;
Calculated MW	30kd
Concentration	1.9mg/ml
Formulation	Rabbit IgG in pH7.4 PBS, 0.05% NaN <sub>3</sub> , 40% Glycerol.
Storage	Store at -20°C

## Application Details

Western blotting: 1:500-1:2000

Immunohistochemistry: 1:10-1:50

## Images



Gel: 12%SDS-PAGE

Lysate: 40 µg

Lane: Mouse muscle tissue

Primary antibody: 1/500 dilution

Secondary antibody: Goat anti rabbit IgG at 1/8000 dilution

Exposure time: 10 seconds

## Background

Nanos1, also known as NOS1, is a 292 amino acid protein that localizes to the perinuclear region of the cytoplasm and contains one nanos-type zinc

finger. Expressed at high levels in spermatogonia and present at lower levels in fetal ovaries, Nanos1 forms a complex with Pumilio 2 and functions to regulate the translation of select mRNAs, specifically via association with the 3'B—UTR of its mRNA targets. Additionally, Nanos1 is required for the establishment and maintenance of germline stem cells, as it prevents their premature entry into oogenesis.

---

Note: This product is for in vitro research use only