

E2F8 Antibody

Catalog No: #43312

Orders: order@signalwayantibody.comSupport: tech@signalwayantibody.com

Description

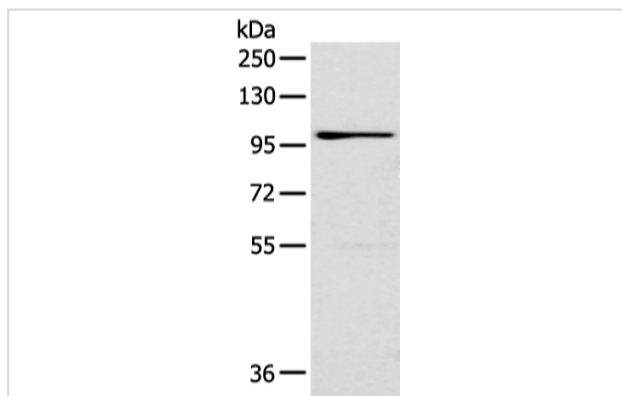
| | |
|-----------------------|---|
| Product Name | E2F8 Antibody |
| Host Species | Rabbit |
| Clonality | Polyclonal |
| Purification | Antigen affinity purification. |
| Applications | WB |
| Species Reactivity | Hu |
| Specificity | The antibody detects endogenous levels of total E2F8 protein. |
| Immunogen Type | peptide |
| Immunogen Description | Synthetic peptide of human E2F8 |
| Target Name | E2F8 |
| Other Names | E2F-8 |
| Accession No. | Swiss-Prot#: A0AVK6Gene ID: 79733 |
| Uniprot | A0AVK6 |
| GeneID | 79733; |
| Calculated MW | 94kd |
| Concentration | 1.2mg/ml |
| Formulation | Rabbit IgG in pH7.4 PBS, 0.05% NaN ₃ , 40% Glycerol. |
| Storage | Store at -20°C |

Application Details

Western blotting: 1:200-1:1000

Immunohistochemistry: 1:20-1:100

Images



Gel: 6%SDS-PAGE
Lysate: 40 µg
Lane: HT-29 cell
Primary antibody: 1/300 dilution
Secondary antibody: Goat anti rabbit IgG at 1/8000 dilution
Exposure time: 1 minute

Background

This gene encodes a member of a family of transcription factors which regulate the expression of genes required for progression through the cell

cycle. The encoded protein regulates progression from G1 to S phase by ensuring the nucleus divides at the proper time. Multiple alternatively spliced variants, encoding the same protein, have been identified.

Note: This product is for in vitro research use only