

EGR2 Antibody

Catalog No: #43313

Orders: order@signalwayantibody.com

Support: tech@signalwayantibody.com

Description

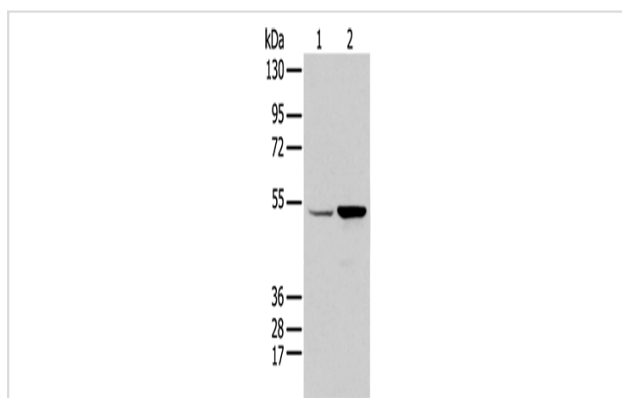
Product Name	EGR2 Antibody
Host Species	Rabbit
Clonality	Polyclonal
Purification	Antigen affinity purification.
Applications	WB
Species Reactivity	Hu Ms Rt
Specificity	The antibody detects endogenous levels of total EGR2 protein.
Immunogen Type	peptide
Immunogen Description	Synthetic peptide of human EGR2
Target Name	EGR2
Other Names	AT591; CMT1D; CMT4E; KROX20
Accession No.	Swiss-Prot#: P11161 Gene ID: 1959
Uniprot	P11161
GeneID	1959;
Calculated MW	50kd
Concentration	1.4mg/ml
Formulation	Rabbit IgG in pH7.4 PBS, 0.05% NaN ₃ , 40% Glycerol.
Storage	Store at -20°C

Application Details

Western blotting: 1:500-1:2000

Immunohistochemistry: 1:40-1:200

Images



Gel: 8%SDS-PAGE

Lysate: 40 µg

Lane 1-2: HEPG2 and 231 cell

Primary antibody: 1/350 dilution

Secondary antibody: Goat anti rabbit IgG at 1/8000 dilution

Exposure time: 10 seconds

Background

The protein encoded by this gene is a transcription factor with three tandem C2H2-type zinc fingers. Defects in this gene are associated with

Charcot-Marie-Tooth disease type 1D (CMT1D), Charcot-Marie-Tooth disease type 4E (CMT4E), and with Dejerine-Sottas syndrome (DSS). Multiple transcript variants encoding two different isoforms have been found for this gene.

Note: This product is for in vitro research use only