

## USP15 antibody

Catalog No: #22855

Orders: order@signalwayantibody.com

Support: tech@signalwayantibody.com

## Description

Product Name	USP15 antibody
Host Species	Rabbit
Clonality	Polyclonal
Purification	Purified by antigen-affinity chromatography.
Applications	WB IHC IF
Species Reactivity	Hu
Immunogen Type	Peptide
Immunogen Description	Synthetic peptide contain a sequence corresponding to a region within amino acids 891 and 952 of human USP15
Target Name	USP15
Accession No.	Swiss-Prot:Q9Y4E8Gene ID:9958
Uniprot	Q9Y4E8
GeneID	9958;
Concentration	0.9mg/ml
Formulation	Supplied in 0.1M Tris-buffered saline with 10% Glycerol (pH7.0). 0.01% Thimerosal was added as a preservative.
Storage	Store at -20°C for long term preservation (recommended). Store at 4°C for short term use.

## Application Details

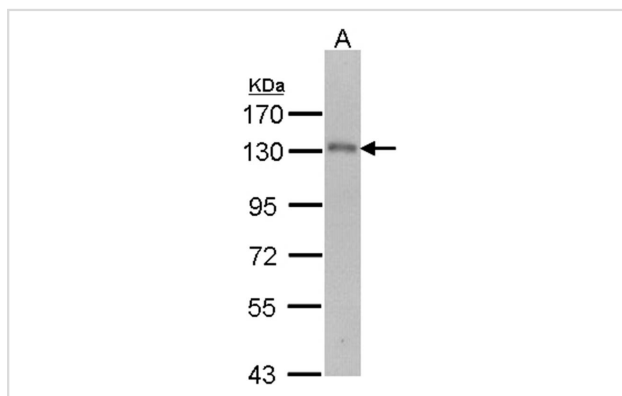
Predicted MW: 109kd

Western blotting: 1:500-1:3000

Immunohistochemistry: 1:100-1:250

Immunofluorescence: 1:100-1:200

## Images

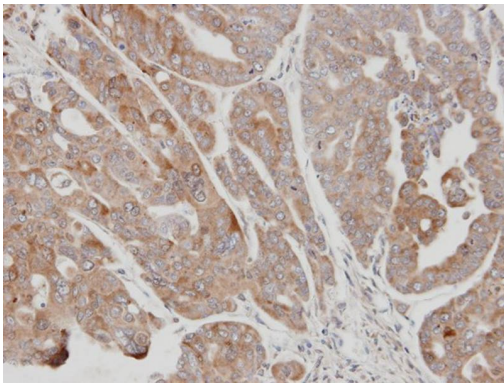


Sample (30 ug of whole cell lysate)

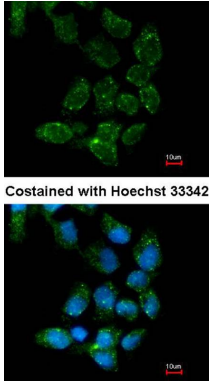
A: Molt-4

7.5% SDS PAGE

Primary antibody diluted at 1: 1000



Immunohistochemical analysis of paraffin-embedded N87 xenograft, using USP15 antibody at 1: 100 dilution.



Immunofluorescence analysis of paraformaldehyde-fixed A431, using USP15 antibody at 1: 200 dilution.

## Background

Ubiquitin (MIM 191339), a highly conserved protein involved in the regulation of intracellular protein breakdown, cell cycle regulation, and stress response, is released from degraded proteins by disassembly of the polyubiquitin chains. The disassembly process is mediated by ubiquitin-specific proteases (USPs). Also see USP1 (MIM 603478).[supplied by OMIM]

Note: This product is for in vitro research use only