

KRT5 Antibody

Catalog No: #43316

Orders: order@signalwayantibody.comSupport: tech@signalwayantibody.com

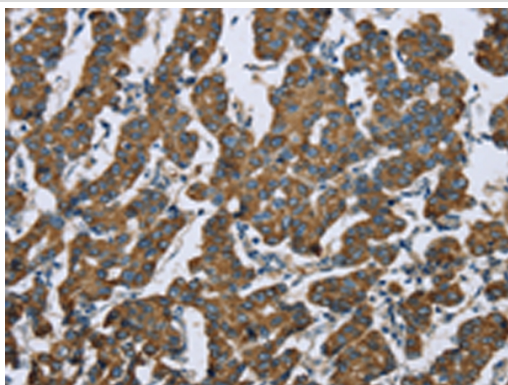
Description

Product Name	KRT5 Antibody
Host Species	Rabbit
Clonality	Polyclonal
Purification	Antigen affinity purification.
Applications	IHC
Species Reactivity	Hu
Specificity	The antibody detects endogenous levels of total KRT5 protein.
Immunogen Type	protein
Immunogen Description	Fusion protein of human KRT5
Target Name	KRT5
Other Names	K5; CK5; DDD; DDD1; EBS2; KRT5A
Accession No.	Swiss-Prot#: P13647Gene ID: 3852
Uniprot	P13647
GeneID	3852;
Concentration	1.1mg/ml
Formulation	Rabbit IgG in pH7.4 PBS, 0.05% NaN ₃ , 40% Glycerol.
Storage	Store at -20°C

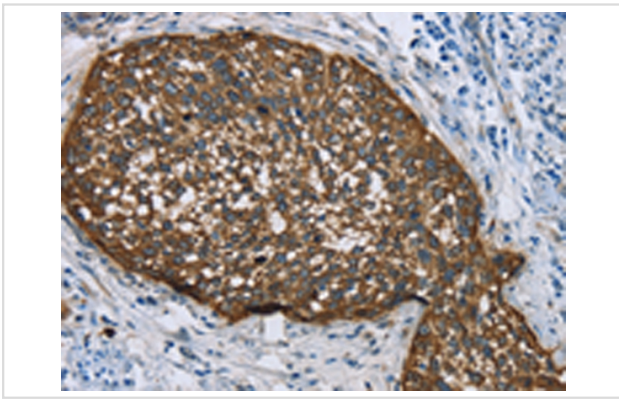
Application Details

Immunohistochemistry: 1:30-1:150

Images



Immunohistochemical analysis of paraffin-embedded Human breast cancer tissue using #43316 at dilution 1/25.



Immunohistochemical analysis of paraffin-embedded Human cervical cancer tissue using #43316 at dilution 1/25.

Background

The protein encoded by this gene is a member of the keratin gene family. The type II cytokeratins consist of basic or neutral proteins which are arranged in pairs of heterotypic keratin chains coexpressed during differentiation of simple and stratified epithelial tissues. This type II cytokeratin is specifically expressed in the basal layer of the epidermis with family member KRT14. Mutations in these genes have been associated with a complex of diseases termed epidermolysis bullosa simplex. The type II cytokeratins are clustered in a region of chromosome 12q12-q13.

Note: This product is for in vitro research use only