

CTSH Antibody

Catalog No: #43317

Orders: order@signalwayantibody.comSupport: tech@signalwayantibody.com

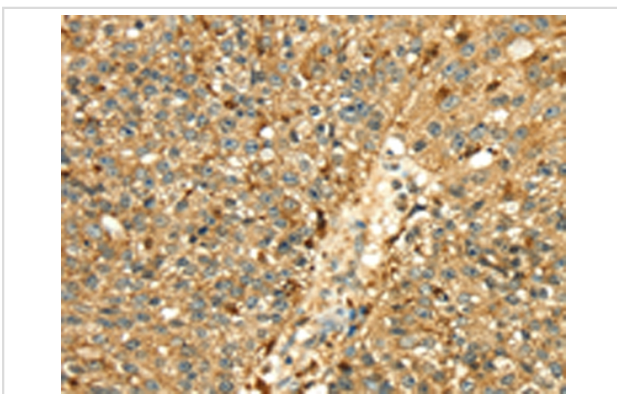
Description

Product Name	CTSH Antibody
Host Species	Rabbit
Clonality	Polyclonal
Purification	Antigen affinity purification.
Applications	IHC
Species Reactivity	Hu
Specificity	The antibody detects endogenous levels of total CTSH protein.
Immunogen Type	protein
Immunogen Description	Fusion protein of human CTSH
Target Name	CTSH
Other Names	CPSB; ACC-4; ACC-5; minichain
Accession No.	Swiss-Prot#: P09668 Gene ID: 1512
Uniprot	P09668
GeneID	1512;
Concentration	2.8mg/ml
Formulation	Rabbit IgG in pH7.4 PBS, 0.05% NaN ₃ , 40% Glycerol.
Storage	Store at -20°C

Application Details

Immunohistochemistry: 1:25-1:100

Images



Immunohistochemical analysis of paraffin-embedded Human breast cancer tissue using #43317 at dilution 1/50,

Background

The protein encoded by this gene is a lysosomal cysteine proteinase important in the overall degradation of lysosomal proteins. It is composed of a dimer of disulfide-linked heavy and light chains, both produced from a single protein precursor. The encoded protein, which belongs to the peptidase C1 protein family, can act both as an aminopeptidase and as an endopeptidase. Increased expression of this gene has been correlated with malignant progression of prostate tumors.?

Note: This product is for in vitro research use only