

## REC8 Antibody

Catalog No: #43324

Orders: [order@signalwayantibody.com](mailto:order@signalwayantibody.com)Support: [tech@signalwayantibody.com](mailto:tech@signalwayantibody.com)

## Description

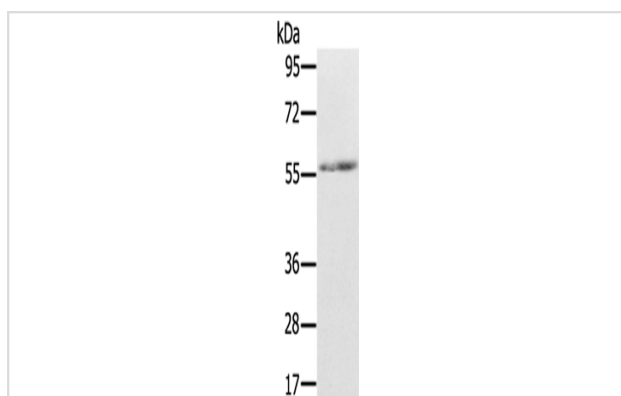
Product Name	REC8 Antibody
Host Species	Rabbit
Clonality	Polyclonal
Purification	Antigen affinity purification.
Applications	WB IHC
Species Reactivity	Hu
Specificity	The antibody detects endogenous levels of total REC8 protein.
Immunogen Description	Fusion protein of human REC8
Target Name	REC8
Other Names	Rec8p; REC8L1; HR21spB
Accession No.	Swiss-Prot#: O95072?Gene ID: 9985
Uniprot	O95072
GeneID	9985;
Calculated MW	63kd
Concentration	1.3mg/ml
Formulation	Rabbit IgG in pH7.4 PBS, 0.05% NaN <sub>3</sub> , 40% Glycerol.
Storage	Store at -20°C

## Application Details

Western blotting: 1:200-1:1000

Immunohistochemistry: 1:100-1:200

## Images



Gel: 8%SDS-PAGE

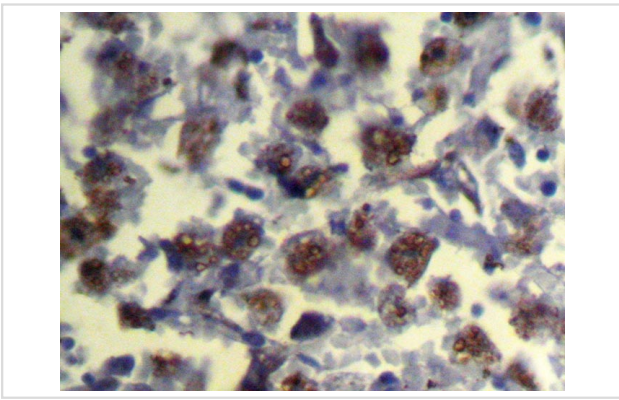
Lysate: 40 µg

Lane: 293T cells

Primary antibody: 1/300 dilution

Secondary antibody: Goat anti rabbit IgG at 1/8000 dilution

Exposure time: 10 seconds



Immunohistochemical analysis of paraffin-embedded Human Liver cancer tissue using #43324 at dilution 1/100,

## Background

This gene encodes a member of the kleisin family of SMC (structural maintenance of chromosome) protein partners. The protein localizes to the axial elements of chromosomes during meiosis in both oocytes and spermatocytes. In the mouse, the homologous protein is a key component of the meiotic cohesion complex, which regulates sister chromatid cohesion and recombination between homologous chromosomes.?

Note: This product is for in vitro research use only