

RNF40 Antibody

Catalog No: #43326

Orders: order@signalwayantibody.comSupport: tech@signalwayantibody.com

Description

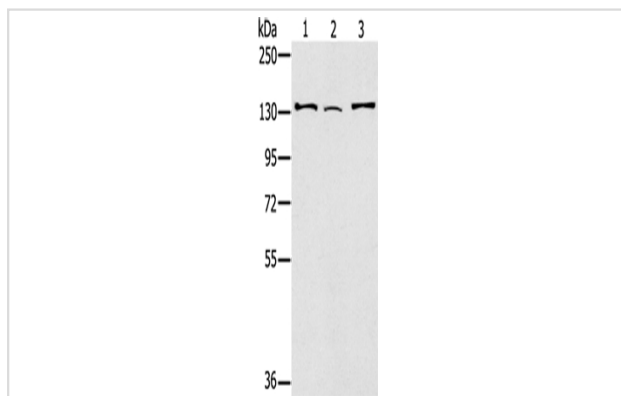
Product Name	RNF40 Antibody
Host Species	Rabbit
Clonality	Polyclonal
Purification	Antigen affinity purification.
Applications	WB IHC
Species Reactivity	Hu
Specificity	The antibody detects endogenous levels of total RNF40 protein.
Immunogen Type	protein
Immunogen Description	Fusion protein of human RNF40
Target Name	RNF40
Other Names	BRE1B; RBP95; STARING
Accession No.	Swiss-Prot#: O75150Gene ID: 9810
Uniprot	O75150
GeneID	9810;
Calculated MW	114kd
Concentration	1.3mg/ml
Formulation	Rabbit IgG in pH7.4 PBS, 0.05% NaN ₃ , 40% Glycerol.
Storage	Store at -20°C

Application Details

Western blotting: 1:200-1:1000

Immunohistochemistry: 1:25-1:100

Images



Gel: 6%SDS-PAGE

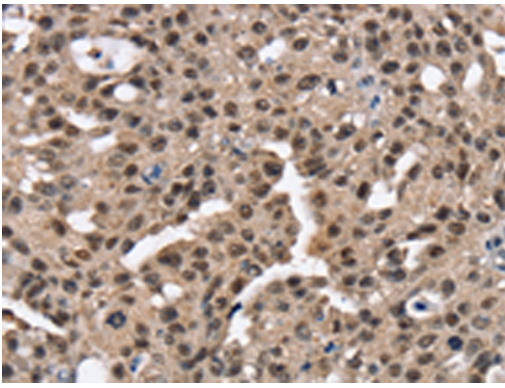
Lysate: 40 µg

Lane 1-3: HeLa cells, 231 cells, A172 cells

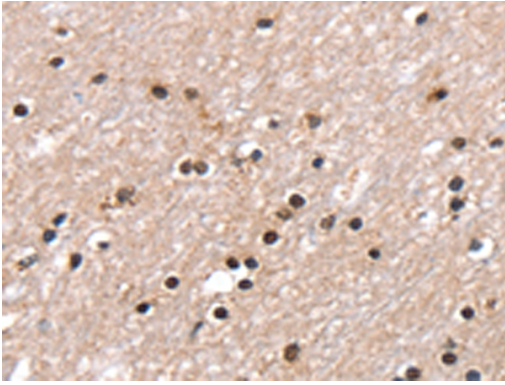
Primary antibody: 1/400 dilution

Secondary antibody: Goat anti rabbit IgG at 1/8000 dilution

Exposure time: 1 minute



Immunohistochemical analysis of paraffin-embedded Human breast cancer tissue using #43326 at dilution 1/25.



Immunohistochemical analysis of paraffin-embedded Human brain tissue using #43326 at dilution 1/25.

Background

The protein encoded by this gene contains a RING finger, a motif known to be involved in protein-protein and protein-DNA interactions. This protein was reported to interact with the tumor suppressor protein RB1. Studies of the rat counterpart suggested that this protein may function as an E3 ubiquitin-protein ligase, and facilitate the ubiquitination and degradation of syntaxin 1, which is an essential component of the neurotransmitter release machinery.?

Note: This product is for in vitro research use only