

S100A11 Antibody

Catalog No: #43327

Orders: order@signalwayantibody.com

Support: tech@signalwayantibody.com

Description

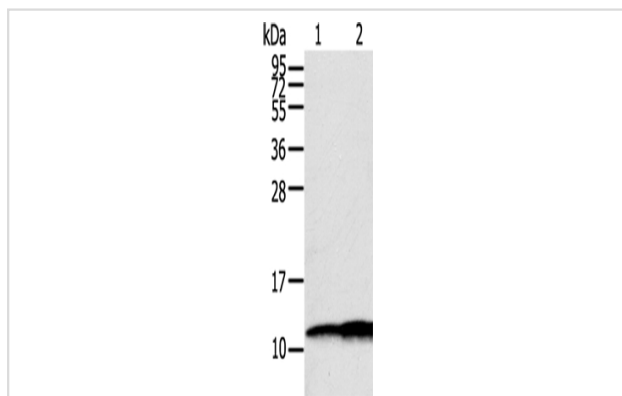
Product Name	S100A11 Antibody
Host Species	Rabbit
Clonality	Polyclonal
Purification	Antigen affinity purification.
Applications	WB IHC
Species Reactivity	Hu
Specificity	The antibody detects endogenous levels of total S100A11 protein.
Immunogen Type	protein
Immunogen Description	Fusion protein of human S100A11
Target Name	S100A11
Other Names	MLN70; S100C; HEL-S-43
Accession No.	Swiss-Prot#: P31949 Gene ID: 6282
Uniprot	P31949
GeneID	6282;
Calculated MW	12kd
Concentration	1.4mg/ml
Formulation	Rabbit IgG in pH7.4 PBS, 0.05% NaN ₃ , 40% Glycerol.
Storage	Store at -20°C

Application Details

Western blotting: 1:1000-1:5000

Immunohistochemistry: 1:25-1:100

Images



Gel: 12%SDS-PAGE

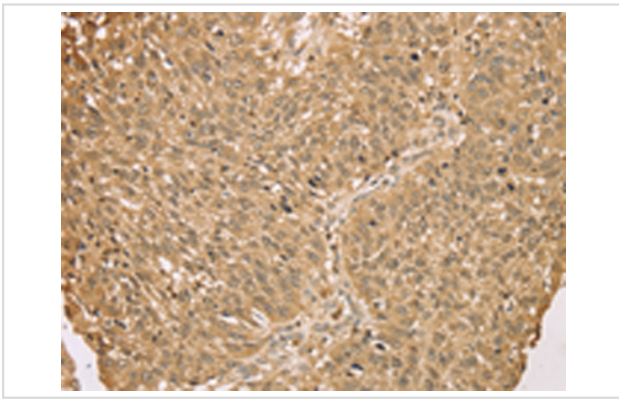
Lysate: 40 µg

Lane 1-2: Hepg2 cells, A549 cells

Primary antibody: 1/600 dilution

Secondary antibody: Goat anti rabbit IgG at 1/8000 dilution

Exposure time: 1 seconds



Immunohistochemical analysis of paraffin-embedded Human lung cancer tissue using #43327 at dilution 1/25,

Background

The protein encoded by this gene is a member of the S100 family of proteins containing 2 EF-hand calcium-binding motifs. S100 proteins are localized in the cytoplasm and/or nucleus of a wide range of cells, and involved in the regulation of a number of cellular processes such as cell cycle progression and differentiation. S100 genes include at least 13 members which are located as a cluster on chromosome 1q21. This protein may function in motility, invasion, and tubulin polymerization.

Note: This product is for in vitro research use only