

SFTPA1 Antibody

Catalog No: #43332

Orders: order@signalwayantibody.comSupport: tech@signalwayantibody.com

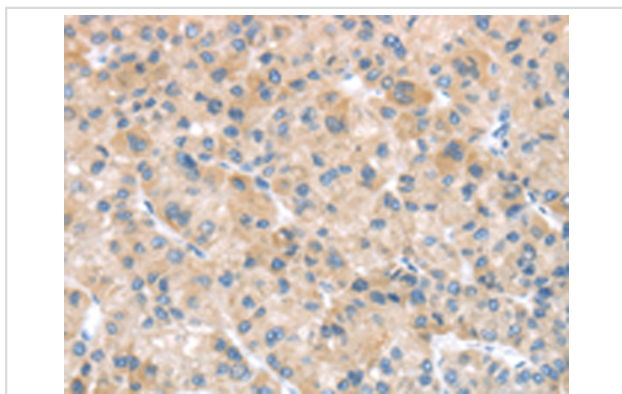
Description

Product Name	SFTPA1 Antibody
Host Species	Rabbit
Clonality	Polyclonal
Purification	Antigen affinity purification.
Applications	IHC
Species Reactivity	Hu
Specificity	The antibody detects endogenous levels of total SFTPA1 protein.
Immunogen Type	protein
Immunogen Description	Full length fusion protein of human SFTPA1
Target Name	SFTPA1
Other Names	SPA; PSAP; PSPA; SP-A; SPA1; PSP-A; SFTP1; SP-A1; COLEC4; SFTPA1B
Accession No.	Swiss-Prot#: Q8IWL2Gene ID: 653509
Uniprot	Q8IWL2
GeneID	653509;
Concentration	2.1mg/ml
Formulation	Rabbit IgG in pH7.4 PBS, 0.05% NaN ₃ , 40% Glycerol.
Storage	Store at -20°C

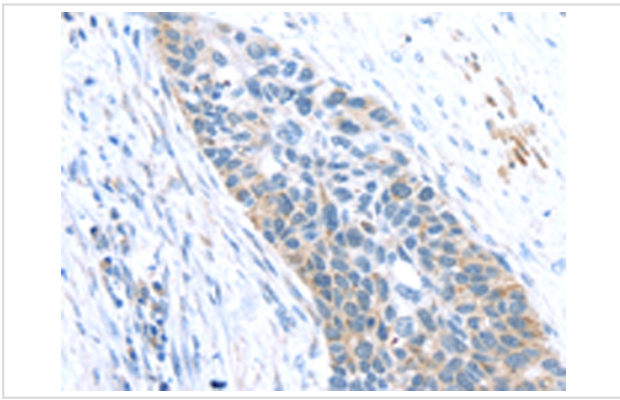
Application Details

Immunohistochemistry: 1:25-1:100

Images



Immunohistochemical analysis of paraffin-embedded Human liver cancer tissue using #43332 at dilution 1/40.



Immunohistochemical analysis of paraffin-embedded Human esophagus cancer tissue using #43332 at dilution 1/40.

Background

This gene encodes a lung surfactant protein that is a member of a subfamily of C-type lectins called collectins. The encoded protein binds specific carbohydrate moieties found on lipids and on the surface of microorganisms. This protein plays an essential role in surfactant homeostasis and in the defense against respiratory pathogens. Mutations in this gene are associated with idiopathic pulmonary fibrosis. Alternate splicing results in multiple transcript variants.

Note: This product is for in vitro research use only