

TBP Antibody

Catalog No: #43335

Orders: order@signalwayantibody.com

Support: tech@signalwayantibody.com

Description

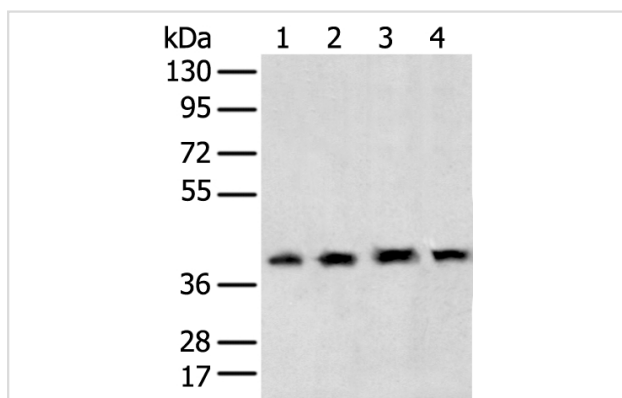
Product Name	TBP Antibody
Host Species	Rabbit
Clonality	Polyclonal
Purification	Antigen affinity purification.
Applications	WB IHC
Species Reactivity	Hu
Specificity	The antibody detects endogenous levels of total TBP protein.
Immunogen Type	protein
Immunogen Description	Full length fusion protein of human TBP
Target Name	TBP
Other Names	HDL4; GTF2D; SCA17; TFIID; GTF2D1
Accession No.	Swiss-Prot#: P20226 Gene ID: 6908
Uniprot	P20226
GeneID	6908;
Calculated MW	38kd
Concentration	1.1mg/ml
Formulation	Rabbit IgG in pH7.4 PBS, 0.05% NaN ₃ , 40% Glycerol.
Storage	Store at -20°C

Application Details

Western blotting: 1:500-1:2000

Immunohistochemistry: 1:25-1:100

Images



Gel: 8%SDS-PAGE

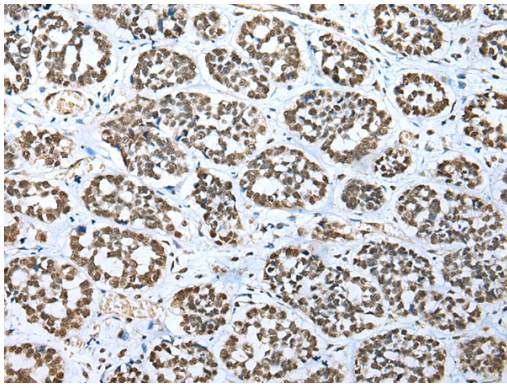
Lysate: 40 µg

Lane 1-4: 231 cell, Human testis tissue, HeLa and Hepg2 cell

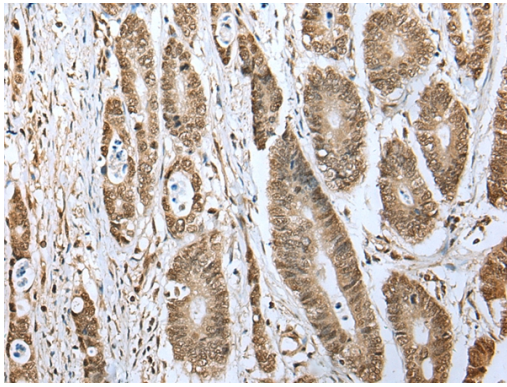
Primary antibody: 1/400 dilution

Secondary antibody: Goat anti rabbit IgG at 1/8000 dilution

Exposure time: 5 seconds



Immunohistochemical analysis of paraffin-embedded Human esophagus cancer tissue using #43335 at dilution 1/20.



Immunohistochemical analysis of paraffin-embedded Human gastric cancer tissue using #43335 at dilution 1/20.

Background

This gene encodes TBP, the TATA-binding protein. A distinctive feature of TBP is a long string of glutamines in the N-terminus. This region of the protein modulates the DNA binding activity of the C terminus, and modulation of DNA binding affects the rate of transcription complex formation and initiation of transcription. The number of CAG repeats encoding the polyglutamine tract is usually 32-39, and expansion of the number of repeats increases the length of the polyglutamine string and is associated with spinocerebellar ataxia 17, a neurodegenerative disorder classified as a polyglutamine disease.

Note: This product is for in vitro research use only