

## TMED2 Antibody

Catalog No: #43338

Orders: order@signalwayantibody.com

Support: tech@signalwayantibody.com

## Description

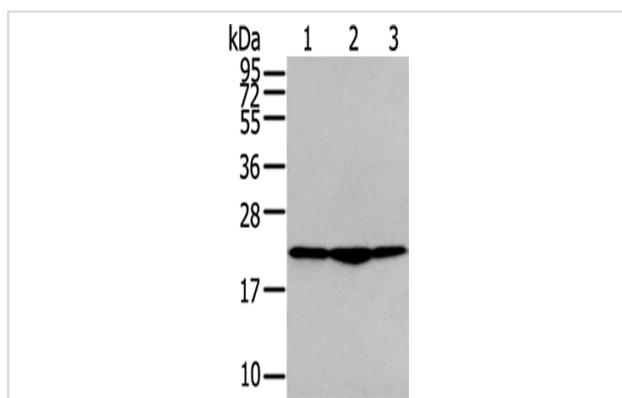
Product Name	TMED2 Antibody
Host Species	Rabbit
Clonality	Polyclonal
Purification	Antigen affinity purification.
Applications	WB IHC
Species Reactivity	Hu Ms Rt
Specificity	The antibody detects endogenous levels of total TMED2 protein.
Immunogen Type	protein
Immunogen Description	Fusion protein of human TMED2
Target Name	TMED2
Other Names	p24; P24A; RNP24
Accession No.	Swiss-Prot#: Q15363 Gene ID: 10959
Uniprot	Q15363
GeneID	10959;
Calculated MW	23kd
Concentration	1.6mg/ml
Formulation	Rabbit IgG in pH7.4 PBS, 0.05% NaN <sub>3</sub> , 40% Glycerol.
Storage	Store at -20°C

## Application Details

Western blotting: 1:500-1:2000

Immunohistochemistry: 1:20-1:100

## Images



Gel: 12%SDS-PAGE

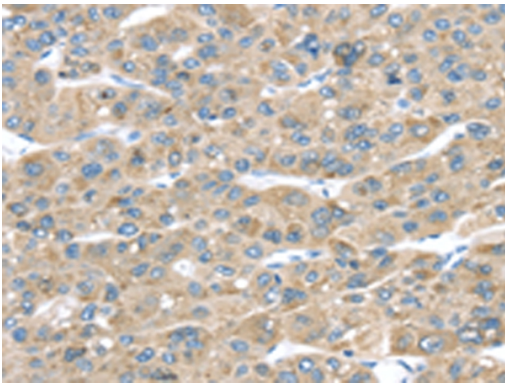
Lysate: 40 µg

Lane 1-3: PC3 cells, A549 cells, Raji cells,

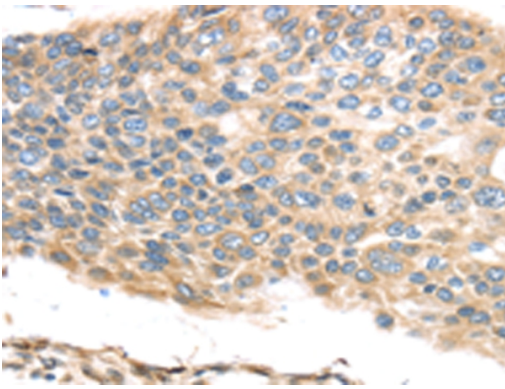
Primary antibody: 1/400 dilution

Secondary antibody: Goat anti rabbit IgG at 1/8000 dilution

Exposure time: 3 seconds



Immunohistochemical analysis of paraffin-embedded Human liver cancer tissue using #43338 at dilution 1/30.



Immunohistochemical analysis of paraffin-embedded Human esophagus cancer tissue using #43338 at dilution 1/30.

## Background

Involved in vesicular protein trafficking. Mainly functions in the early secretory pathway but also in post-Golgi membranes. Thought to act as cargo receptor at the luminal side for incorporation of secretory cargo molecules into transport vesicles and to be involved in vesicle coat formation at the cytoplasmic side. In COPII vesicle-mediated anterograde transport involved in the transport of GPI-anchored proteins and proposed to act together with TMED10 as their cargo receptor; the function specifically implies SEC24C and SEC24D of the COPII vesicle coat and lipid raft-like microdomains of the ER. Recognizes GPI anchors structural remodeled in the ER by PGAP1 and MPPE1. In COPI vesicle-mediated retrograde transport inhibits the GTPase-activating activity of ARFGAP1 towards ARF1 thus preventing immature uncoating and allowing cargo selection to take place. Involved in trafficking of G protein-coupled receptors (GPCRs). Regulates F2RL1, OPRM1 and P2RY4 exocytic trafficking from the Golgi to the plasma membrane thus contributing to receptor resensitization. Facilitates CASR maturation and stabilization in the early secretory pathway and increases CASR plasma membrane targeting. Proposed to be involved in organization of intracellular membranes such as the maintenance of the Golgi apparatus. May also play a role in the biosynthesis of secreted cargo such as eventual processing.

Note: This product is for in vitro research use only