

## MED28 Antibody

Catalog No: #43339

Orders: [order@signalwayantibody.com](mailto:order@signalwayantibody.com)Support: [tech@signalwayantibody.com](mailto:tech@signalwayantibody.com)

## Description

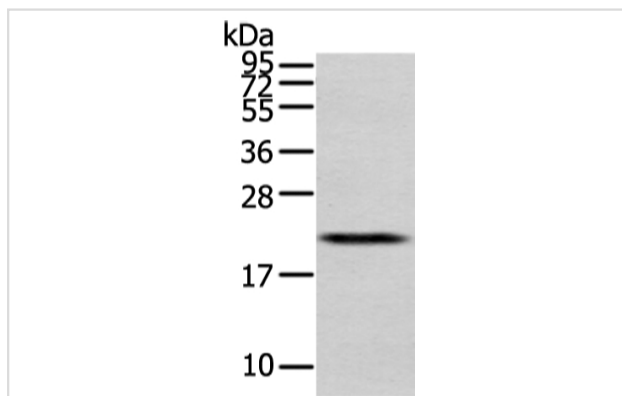
Product Name	MED28 Antibody
Host Species	Rabbit
Clonality	Polyclonal
Purification	Antigen affinity purification.
Applications	WB IHC
Species Reactivity	Hu
Specificity	The antibody detects endogenous levels of total MED28 protein.
Immunogen Type	protein
Immunogen Description	Full length fusion protein of human MED28
Target Name	MED28
Other Names	EG1; magicin; 1500003D12Rik
Accession No.	Swiss-Prot#: Q9H204Gene ID: 80306
Uniprot	Q9H204
GeneID	80306;
Calculated MW	20kd
Concentration	1.6mg/ml
Formulation	Rabbit IgG in pH7.4 PBS, 0.05% NaN <sub>3</sub> , 40% Glycerol.
Storage	Store at -20°C

## Application Details

Western blotting: 1:500-1:2000

Immunohistochemistry: 1:25-1:100

## Images



Gel: 12%SDS-PAGE

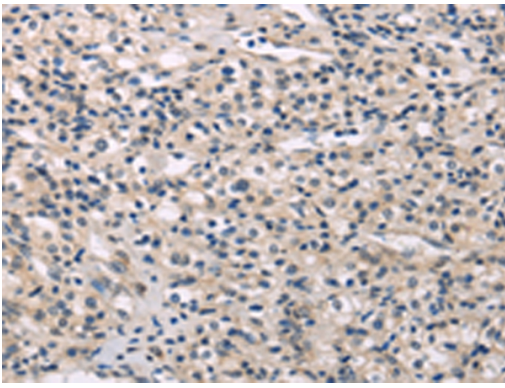
Lysate: 40 µg

Lane: Human placenta tissue

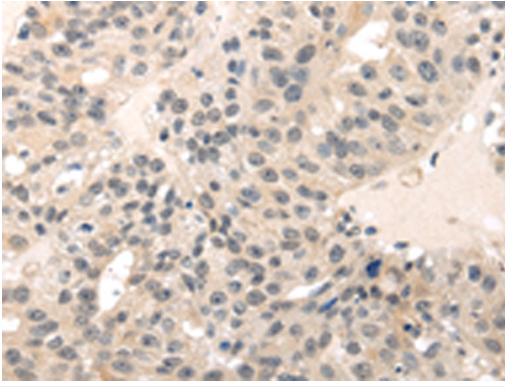
Primary antibody: 1/400 dilution

Secondary antibody: Goat anti rabbit IgG at 1/8000 dilution

Exposure time: 30 seconds



Immunohistochemical analysis of paraffin-embedded Human prostate cancer tissue using #43339 at dilution 1/30.



Immunohistochemical analysis of paraffin-embedded Human breast cancer tissue using #43339 at dilution 1/30.

## Background

Med28 (mediator complex subunit 28), also known as EG1 (endothelial-derived protein 1), magicin (merlin and Grb2-interacting cytoskeletal protein) or tumor angiogenesis marker EG-1, is a 178 amino acid subunit of the Mediator complex that localizes to both nucleus and cytoplasm.?

Note: This product is for in vitro research use only