

TREM1 Antibody

Catalog No: #43342



Orders: order@signalwayantibody.com
Support: tech@signalwayantibody.com

Description

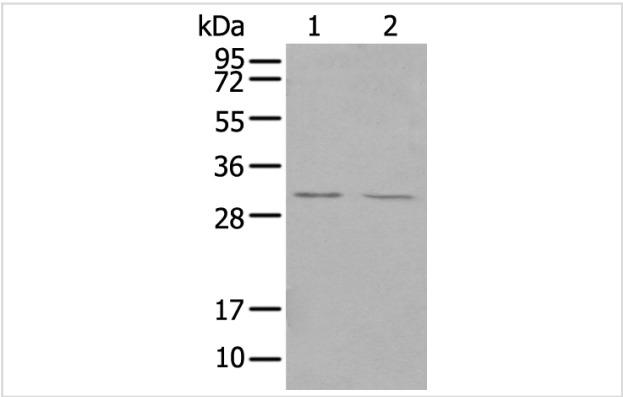
Product Name	TREM1 Antibody
Host Species	Rabbit
Clonality	Polyclonal
Purification	Antigen affinity purification.
Applications	WB IHC
Species Reactivity	Hu
Specificity	The antibody detects endogenous levels of total TREM1 protein.
Immunogen Type	protein
Immunogen Description	Full length fusion protein of human TREM1
Target Name	TREM1
Other Names	CD354; TREM-1
Accession No.	Swiss-Prot#: Q9NP99Gene ID: 54210
Uniprot	Q9NP99
GeneID	54210;
Calculated MW	26kd
Concentration	1.0mg/ml
Formulation	Rabbit IgG in pH7.4 PBS, 0.05% NaN3, 40% Glycerol.
Storage	Store at -20°C

Application Details

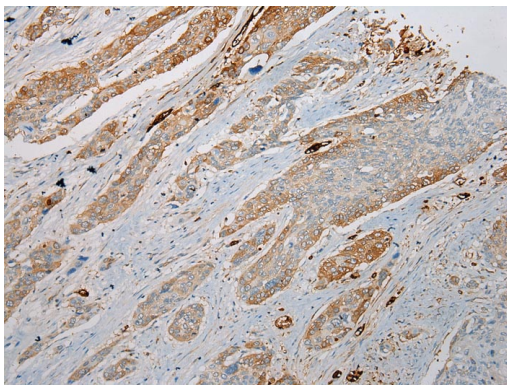
Western blotting: 1:200-1:1000

Immunohistochemistry: 1:100-1:200

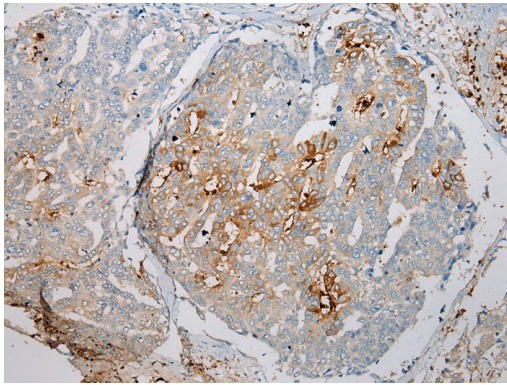
Images



Gel: 12%SDS-PAGE
Lysate: 40 µg
Lane 1-2: Hepg2 and 293T cell
Primary antibody: 1/200 dilution
Secondary antibody: Goat anti rabbit IgG at 1/8000 dilution
Exposure time: 20 seconds



Immunohistochemical analysis of paraffin-embedded Human Esophagus cancer tissue using #43342 at dilution 1/200.



Immunohistochemical analysis of paraffin-embedded Human Liver tissue using #43342 at dilution 1/200.

Background

This gene encodes a receptor belonging to the Ig superfamily that is expressed on myeloid cells. This protein amplifies neutrophil and monocyte-mediated inflammatory responses triggered by bacterial and fungal infections by stimulating release of pro-inflammatory chemokines and cytokines, as well as increased surface expression of cell activation markers. Alternatively spliced transcript variants encoding different isoforms have been noted for this gene.

Note: This product is for in vitro research use only