

TSC22D1 Antibody

Catalog No: #43344

Orders: order@signalwayantibody.comSupport: tech@signalwayantibody.com

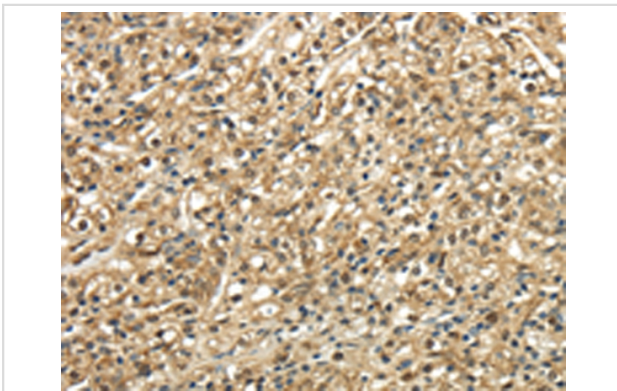
Description

Product Name	TSC22D1 Antibody
Host Species	Rabbit
Clonality	Polyclonal
Purification	Antigen affinity purification.
Applications	IHC
Species Reactivity	Hu
Specificity	The antibody detects endogenous levels of total TSC22D1 protein.
Immunogen Type	protein
Immunogen Description	Full length fusion protein of human TSC22D1
Target Name	TSC22D1
Other Names	Ptg-2; TSC22; TGFB114
Accession No.	Swiss-Prot#: Q15714 Gene ID: 8848
Uniprot	Q15714
GeneID	8848;
Concentration	1.7mg/ml
Formulation	Rabbit IgG in pH7.4 PBS, 0.05% NaN ₃ , 40% Glycerol.
Storage	Store at -20°C

Application Details

Immunohistochemistry: 1:25-1:100

Images



Immunohistochemical analysis of paraffin-embedded Human prostate cancer tissue using #43344 at dilution 1/30,

Background

This gene encodes a member of the TSC22 domain family of leucine zipper transcription factors. The encoded protein is stimulated by transforming growth factor beta, and regulates the transcription of multiple genes including C-type natriuretic peptide. The encoded protein may play a critical role in tumor suppression through the induction of cancer cell apoptosis, and a single nucleotide polymorphism in the promoter of this gene has been associated with diabetic nephropathy. Alternatively spliced transcript variants encoding multiple isoforms have been observed for this gene.

Note: This product is for in vitro research use only