

ZFP28 Antibody

Catalog No: #43349

Orders: order@signalwayantibody.com

Support: tech@signalwayantibody.com

Description

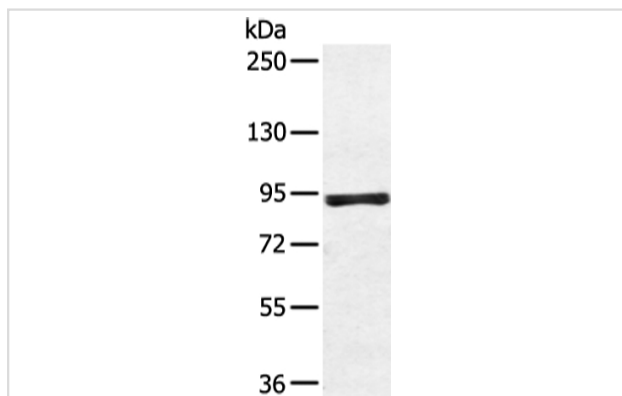
Product Name	ZFP28 Antibody
Host Species	Rabbit
Clonality	Polyclonal
Purification	Antigen affinity purification.
Applications	WB
Species Reactivity	Hu
Specificity	The antibody detects endogenous levels of total ZFP28 protein.
Immunogen Type	protein
Immunogen Description	Fusion protein of human ZFP28
Target Name	ZFP28
Other Names	mkr5
Accession No.	Swiss-Prot#: Q8NHY6Gene ID: 140612
Uniprot	Q8NHY6
GeneID	140612;
Calculated MW	99kd
Concentration	1.7mg/ml
Formulation	Rabbit IgG in pH7.4 PBS, 0.05% NaN ₃ , 40% Glycerol.
Storage	Store at -20°C

Application Details

Western blotting: 1:200-1:1000

Immunohistochemistry: 1:10-1:50

Images



Gel: 6%SDS-PAGE
Lysate: 40 µg
Lane: 293T cell
Primary antibody: 1/450 dilution
Secondary antibody: Goat anti rabbit IgG at 1/8000 dilution
Exposure time: 10 seconds

Background

May be involved in transcriptional regulation. May have a role in embryonic development.

Note: This product is for in vitro research use only