

## NDUFB6 Antibody

Catalog No: #43351

Orders: order@signalwayantibody.com

Support: tech@signalwayantibody.com

## Description

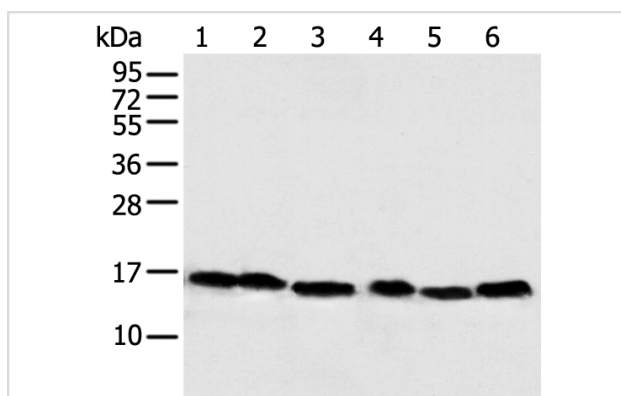
Product Name	NDUFB6 Antibody
Host Species	Rabbit
Clonality	Polyclonal
Purification	Antigen affinity purification.
Applications	WB IHC
Species Reactivity	Hu
Specificity	The antibody detects endogenous levels of total NDUFB6 protein.
Immunogen Description	Full length fusion protein of human NDUFB6
Target Name	NDUFB6
Other Names	CI; B17
Accession No.	Swiss-Prot#: O95139Gene ID: 4712
Uniprot	O95139
GeneID	4712;
Calculated MW	15kd
Concentration	1mg/ml
Formulation	Rabbit IgG in pH7.4 PBS, 0.05% NaN <sub>3</sub> , 40% Glycerol.
Storage	Store at -20°C

## Application Details

Western blotting: 1:500-1:2000

Immunohistochemistry: 1:100-1:200

## Images



Gel: 12%SDS-PAGE

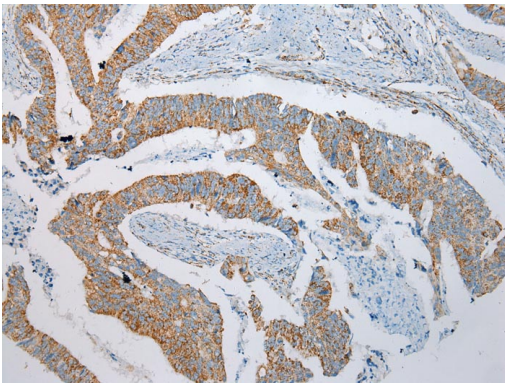
Lysate: 40 µg

Lane 1-6: 293T cells transfected with pcDNA3.1+NC and 231 cell human fetal muscle tissue

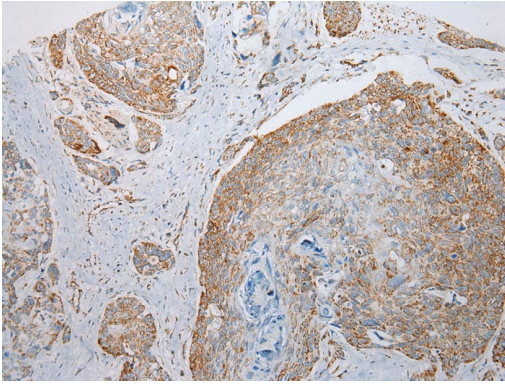
Primary antibody: 1/500 dilution

Secondary antibody: Goat anti rabbit IgG at 1/8000 dilution

Exposure time: 1 second



Immunohistochemical analysis of paraffin-embedded Human Colorectal cancer tissue using #43351 at dilution 1/200.



Immunohistochemical analysis of paraffin-embedded Human Esophagus cancer tissue using #43351 at dilution 1/200.

## Background

The protein encoded by this gene is a subunit of the multisubunit NADH:ubiquinone oxidoreductase (complex I). Mammalian complex I is composed of 45 different subunits. It locates at the mitochondrial inner membrane. This protein has NADH dehydrogenase activity and oxidoreductase activity. It transfers electrons from NADH to the respiratory chain. The immediate electron acceptor for the enzyme is believed to be ubiquinone. Alternative splicing occurs at this locus and three transcript variants encoding distinct isoforms have been identified.

Note: This product is for in vitro research use only