

LMNTD1 Antibody

Catalog No: #43355

Orders: order@signalwayantibody.comSupport: tech@signalwayantibody.com

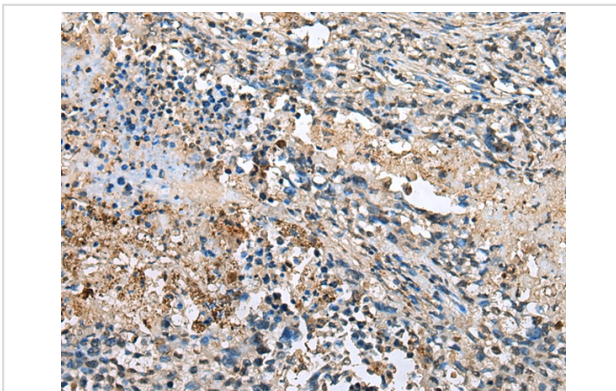
Description

Product Name	LMNTD1 Antibody
Host Species	Rabbit
Clonality	Polyclonal
Purification	Antigen affinity purification.
Applications	IHC
Species Reactivity	Hu
Specificity	The antibody detects endogenous levels of total LMNTD1 protein.
Immunogen Type	protein
Immunogen Description	Fusion protein of human LMNTD1
Target Name	LMNTD1
Other Names	IFLTD1; PAS1C1
Accession No.	Swiss-Prot#: Q8N9Z9 Gene ID: 160492
Uniprot	Q8N9Z9
GeneID	160492;
Concentration	0.8mg/ml
Formulation	Rabbit IgG in pH7.4 PBS, 0.05% NaN ₃ , 40% Glycerol.
Storage	Store at -20°C

Application Details

Immunohistochemistry: 1:20-1:100

Images



Immunohistochemical analysis of paraffin-embedded Human lung cancer tissue using #43355 at dilution 1/20,

Background

LMNTD1, also known as IFLTD1. IFLTD1 was initially identified as a candidate gene for pulmonary adenoma susceptibility 1 gene in mice. Transcripts of the gene were only detected in mouse lung tissue from strains carrying the Pas1-susceptible allele. Expression of different alleles of this gene in lung cancer cell lines resulted in different levels of colony formation in in vitro colony formation assays, suggesting that allelic variants of this gene can modulate growth of human cancer cells.

Note: This product is for in vitro research use only