

## CCBL1 Antibody

Catalog No: #43357

Orders: [order@signalwayantibody.com](mailto:order@signalwayantibody.com)Support: [tech@signalwayantibody.com](mailto:tech@signalwayantibody.com)

## Description

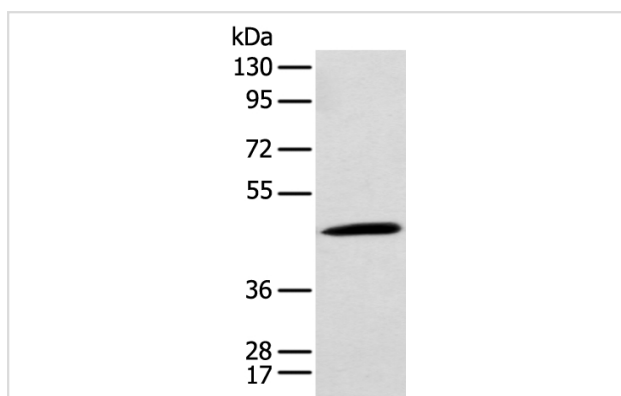
Product Name	CCBL1 Antibody
Host Species	Rabbit
Clonality	Polyclonal
Purification	Antigen affinity purification.
Applications	WB IHC
Species Reactivity	Hu Rt
Specificity	The antibody detects endogenous levels of total CCBL1 protein.
Immunogen Description	Full length fusion protein of human CCBL1
Target Name	CCBL1
Other Names	GTK; KAT1; KATI
Accession No.	Swiss-Prot#: Q16773Gene ID: 883
Uniprot	Q16773
GeneID	883;
Calculated MW	48kd
Concentration	1.2mg/ml
Formulation	Rabbit IgG in pH7.4 PBS, 0.05% NaN <sub>3</sub> , 40% Glycerol.
Storage	Store at -20°C

## Application Details

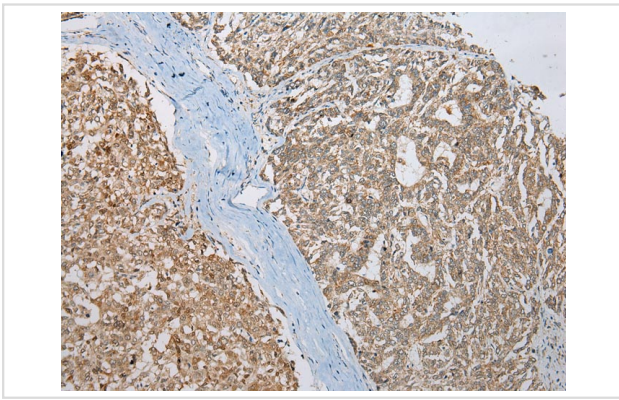
Western blotting: 1:500-1:2000

Immunohistochemistry: 1:100-1:200

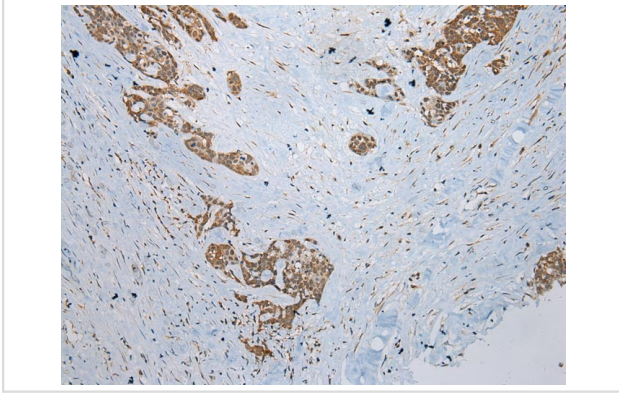
## Images



Gel: 8%SDS-PAGE  
Lysate: 40 µg  
Lane: Rat kidney tissue  
Primary antibody: 1/300 dilution  
Secondary antibody: Goat anti rabbit IgG at 1/8000 dilution  
Exposure time: 30S



Immunohistochemical analysis of paraffin-embedded Human Liver cancer tissue using #43357 at dilution 1/200,



Immunohistochemical analysis of paraffin-embedded Human Thyroid cancer tissue using #43357 at dilution 1/200,

## Background

This gene encodes a cytosolic enzyme that is responsible for the metabolism of cysteine conjugates of certain halogenated alkenes and alkanes. This metabolism can form reactive metabolites leading to nephrotoxicity and neurotoxicity. Increased levels of this enzyme have been linked to schizophrenia. Multiple transcript variants that encode different isoforms have been identified for this gene.

Note: This product is for in vitro research use only