

CARTPT Antibody

Catalog No: #43358

Orders: order@signalwayantibody.comSupport: tech@signalwayantibody.com

Description

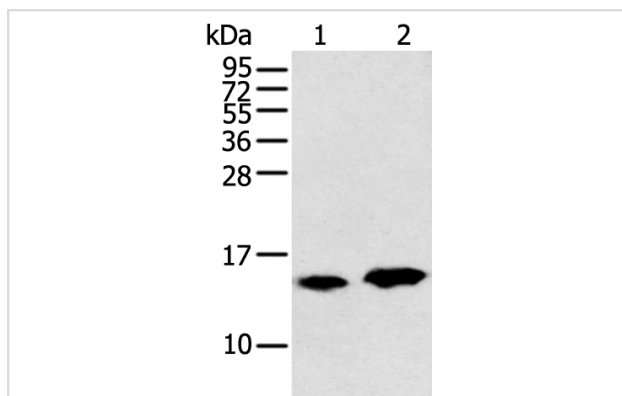
Product Name	CARTPT Antibody
Host Species	Rabbit
Clonality	Polyclonal
Purification	Antigen affinity purification.
Applications	WB IHC
Species Reactivity	Hu Rt Ms
Specificity	The antibody detects endogenous levels of total CARTPT protein.
Immunogen Description	Full length fusion protein of human CARTPT
Target Name	CARTPT
Other Names	CART
Accession No.	Swiss-Prot#: Q16568Gene ID: 9607
Uniprot	Q16568
GeneID	9607;
Calculated MW	13kd
Concentration	1.4mg/ml
Formulation	Rabbit IgG in pH7.4 PBS, 0.05% NaN ₃ , 40% Glycerol.
Storage	Store at -20°C

Application Details

Western blotting: 1:500-1:2000

Immunohistochemistry: 1:100-1:200

Images



Gel: 12%SDS-PAGE

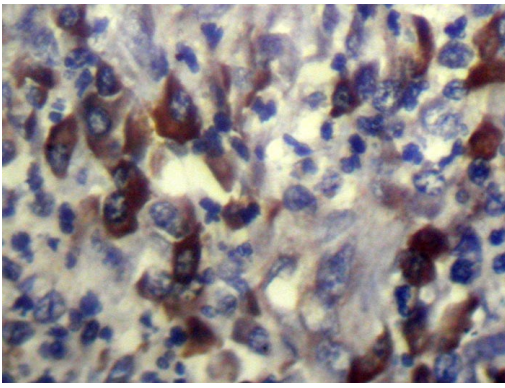
Lysate: 40 µg

Lane 1-2: Rat heart tissue and Mouse brain tissue

Primary antibody: 1/350 dilution

Secondary antibody: Goat anti rabbit IgG at 1/8000 dilution

Exposure time: 10 seconds



Immunohistochemical analysis of paraffin-embedded Human Esophagus cancer tissue using #43358 at dilution 1/100,

Background

This gene encodes a secreted protein which is processed by prohormone/proprotein convertases to produce smaller, biologically active peptides. Expression of the transcript for this gene is regulated by certain drugs such as cocaine, and the encoded protein is thought to be involved in the regulation of appetite and stress. Mutations in this gene are associated with susceptibility to obesity.

Note: This product is for in vitro research use only