

RPS15A Antibody

Catalog No: #43359

Orders: order@signalwayantibody.com

Support: tech@signalwayantibody.com

Description

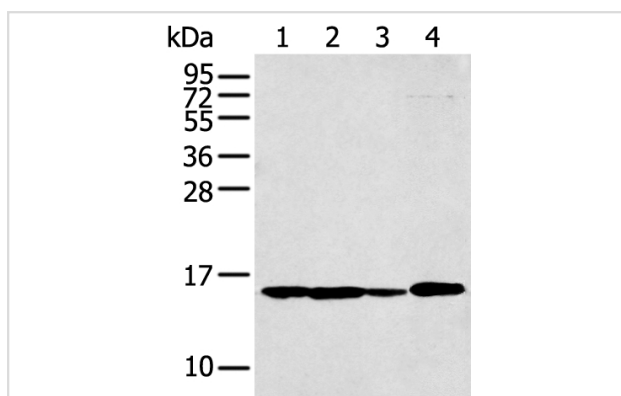
Product Name	RPS15A Antibody
Host Species	Rabbit
Clonality	Polyclonal
Purification	Antigen affinity purification.
Applications	WB IHC
Species Reactivity	Hu Ms Rt
Specificity	The antibody detects endogenous levels of total RPS15A protein.
Immunogen Description	Full length fusion protein of human RPS15A
Target Name	RPS15A
Other Names	S15a
Accession No.	Swiss-Prot#: P62244 Gene ID: 6210
Uniprot	P62244
GeneID	6210;
Calculated MW	15kd
Concentration	0.8mg/ml
Formulation	Rabbit IgG in pH7.4 PBS, 0.05% NaN ₃ , 40% Glycerol.
Storage	Store at -20°C

Application Details

Western blotting: 1:200-1:1000

Immunohistochemistry: 1:100-1:200

Images



Gel: 12%SDS-PAGE

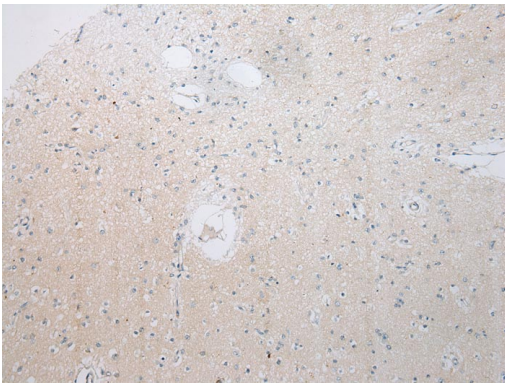
Lysate: 40 µg

Lane 1-4: Human fetal liver tissue, B₂93T cell, B₂93T cell, Human fetal muscle tissue and Hepg2 cell

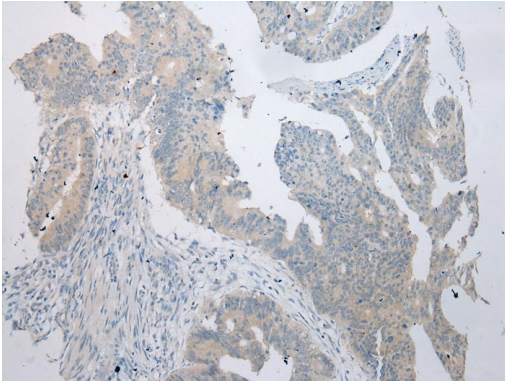
Primary antibody: 1/200 dilution

Secondary antibody: Goat anti rabbit IgG at 1/8000 dilution

Exposure time: 1 minute



Immunohistochemical analysis of paraffin-embedded Human Brain cancer tissue using #43359 at dilution 1/200.



Immunohistochemical analysis of paraffin-embedded Human Colorectal cancer tissue using #43359 at dilution 1/200.

Background

Ribosomes, the organelles that catalyze protein synthesis, consist of a small 40S subunit and a large 60S subunit. Together these subunits are composed of 4 RNA species and approximately 80 structurally distinct proteins. This gene encodes a ribosomal protein that is a component of the 40S subunit. The protein belongs to the S8P family of ribosomal proteins. It is located in the cytoplasm. As is typical for genes encoding ribosomal proteins, there are multiple processed pseudogenes of this gene dispersed through the genome.

Note: This product is for in vitro research use only