

NDP Antibody

Catalog No: #43361

Orders: order@signalwayantibody.comSupport: tech@signalwayantibody.com

Description

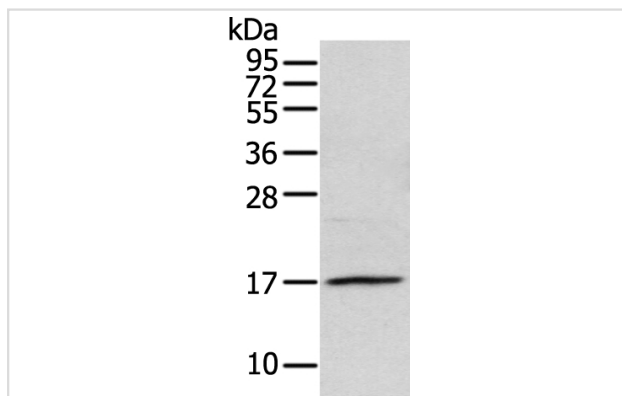
Product Name	NDP Antibody
Host Species	Rabbit
Clonality	Polyclonal
Purification	Antigen affinity purification.
Applications	WB IHC
Species Reactivity	Hu
Specificity	The antibody detects endogenous levels of total NDP protein.
Immunogen Type	protein
Immunogen Description	Full length fusion protein of human NDP
Target Name	NDP
Other Names	ND; EVR2; FEVR
Accession No.	Swiss-Prot#: Q00604Gene ID: 4693
Uniprot	Q00604
GeneID	4693;
Calculated MW	15kd
Concentration	1.2mg/ml
Formulation	Rabbit IgG in pH7.4 PBS, 0.05% NaN ₃ , 40% Glycerol.
Storage	Store at -20°C

Application Details

Western blotting: 1:200-1:1000

Immunohistochemistry: 1:25-1:100

Images



Gel: 12%SDS-PAGE

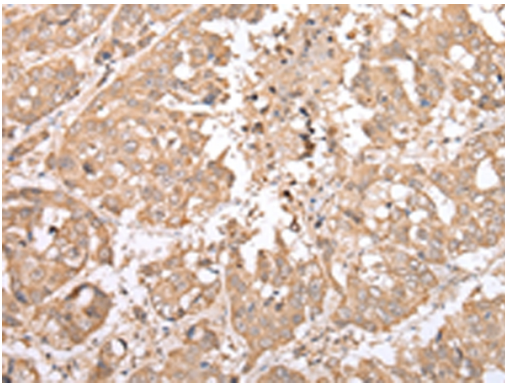
Lysate: 40 µg

Lane: Human fetal liver tissue

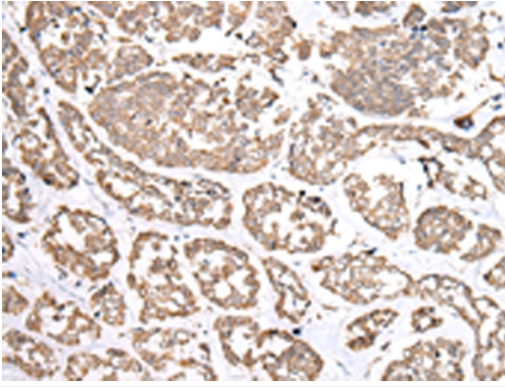
Primary antibody: 1/300 dilution

Secondary antibody: Goat anti rabbit IgG at 1/8000 dilution

Exposure time: 2 minutes



Immunohistochemical analysis of paraffin-embedded Human breast cancer tissue using #43361 at dilution 1/20.



Immunohistochemical analysis of paraffin-embedded Human esophagus cancer tissue using #43361 at dilution 1/20.

Background

This gene encodes a secreted protein with a cystein-knot motif that activates the Wnt/beta-catenin pathway. The protein forms disulfide-linked oligomers in the extracellular matrix. Mutations in this gene result in Norrie disease and X-linked exudative vitreoretinopathy.

Note: This product is for in vitro research use only